

2024

SUMMER Adventure GUIDE



Kids at Lake Darling, North Dakota
Ashley Vanley Photography

northnersentry
MINOT AIR FORCE BASE NEWSPAPER | WWW.NORTHERNSENTRY.COM

Advertisements contained herein do not constitute an endorsement by the department of the Air Force of Minot Air Force Base.
Everything is available without regard to color, religion, sex or other non merit factor of the purchaser, user or patron.

HERE, IT'S ALL

Fun & Games

ENJOY ENTERTAINMENT CATERED TO ALL AGES AND INTERESTS

- Slots, Tables & Other Gaming
- Vegas-Style Sportsbook
- Gaming Riverboat
- Outdoor Water Park
- Event Center for Concerts, Conferences & more
- Luxury Lodge Accommodations
- RV Park
- Full-Service Marina & Fishing
- Nearby Golf Courses & Hiking
- Food Court with Pizza Station, Homestyle Mini Buffet, Burgers & Ice Cream Shop
- On-Site Convenience & Liquor Store
- Luxury hotel tower with amazing room views coming summer of 2025



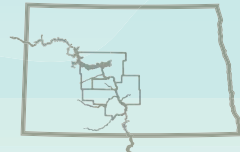
800.294.5454
4BEARSCASINO.COM



Visit the NORTHERN PLAINS NATIONAL HERITAGE AREA

The Northern Plains National Heritage Area points visitors to the natural, cultural, recreational and historic sites along the Missouri River in central North Dakota. For a deep dive of the sites you absolutely need to visit, come to the Northern Plains National Heritage Area's Orientation Headquarters at the Landing, 1700 River Road N., in Bismarck, North Dakota.

Explore the region's heritage first hand!



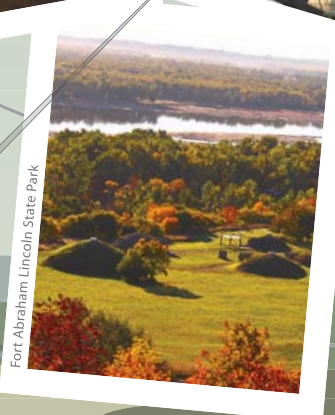
Knife River Indian Villages National Historic Site



Double Ditch Indian Village State Historic Site



Lewis & Clark Riverboat



Fort Abraham Lincoln State Park



NPS Passport stamp site for the Northern Plains National Heritage Area, 1700 River Road N., Bismarck, ND

Learn more at www.northernplainsheritage.org





TABLE OF CONTENTS

Sunflower field outside Minot, ND

Ashley Vanley Photography

Welcome	5	South Dakota	46
Minot AFB		North Dakota Day Trips	49
Things to Love about Minot AFB	7	Explore Rugby	52
Processing the PCS	8	Watford City	54
Everything you need for Summer	10	North Dakota Zoos	56
Local Parks	12	North Dakota Museums	58
North Dakota Arts	15	Pools & Water Parks	63
North Dakota Historic Sites	18	North Dakota Fairs	65
Explore Medora	20	Indoor Activities	67
North Dakota Gardens	27	North Dakota Golf Courses & Mini Golf	70
North Dakota Scenic Drives	29	North Dakota Motorsports	73
North Dakota Trails	30	Recreational Rentals	75
North Dakota Fishing	35	Shooting Ranges	77
North Dakota State Parks, Camping & Lakes	41		

PRODUCED BY: Northern Sentry, 315 South Main Street, Suite 202, Minot, ND 58701, 701-839-0946.

PHOTO CREDITS: North Dakota Tourism, International Peace Garden, Medora, Amy Taborsky, Anzley Harmon, Beth Duchsherer, Dan Koeck, David Lee, Gerald Blank, Glasser, Jason Lindsey, Rick Bohn, April Rooks, Chip Henderson, Jim Gallop, Shawn Connell, John Weber, Patricia Stockdill, N.D. Game and Fish Department, Minot Parks, Minot AFB Public Affairs.

northern sentry

MINOT AIR FORCE BASE NEWSPAPER

WWW.NORTHERNSENTRY.COM

SHARING *Your* MINOT AFB ADVENTURE



Hot Tots Military Appreciation Baseball Game

Welcome to North Dakota

In North Dakota we are so very fortunate to experience four distinct and very different seasons. Of course summer is by far the most active time of the year for vacations and weekend trips, but spring and fall also afford those who look for activities the opportunities to get out and enjoy not only North Dakota, but neighboring states of Montana, Minnesota and South Dakota. And let's not forget those neighbors to the north of us in Saskatchewan and Manitoba. The Summer Adventure guide is one of those "take it along" resources for locating places to go, places to stay, and popular activities. We have even listed a couple of our "Best kept

Secret" locations for those of you who want to take the path less traveled. In combination with several state agencies, we also offer editorial content that will give a little more information about activities and how to best enjoy them. We also want to thank our many advertisers who are eager to help you enjoy summer 2024 to it's fullest. Got questions? Give them a call. It is our mid-western personality to give you friendly advice and encouragement. So summer, here we come. Have a great time and take lots of pictures.

We have you covered for your
Summertime Fashion
wants and needs

• NEW ARRIVALS ALMOST DAILY! • MAC AND ME DENIM



• MULTI GENERATIONAL CLOTHING • EXCLUSIVE JEWELRY



Mainstream Boutique

LOCATED IN DOWNTOWN MINOT
2 South Main Street | Minot, North Dakota
701-837-7711 | mainstreamboutique.com

Sensational Summer PHOTO CONTEST

Maybe it's because it is only a few short months. Maybe it's because we finally get to see the sunshine, which our skin and spirit craves. But, whatever the case, summertime in North Dakota is simply magical. It's the perfect outdoor weather to fish, swim, boat, hike or simply "be". For a few blessed months every year, North Dakotans get to embrace the beauty of the outdoors.

We'd like to glorify this magical time by documenting it forever in history with a **Sensation Summer Photo Contest!**

Send us your photos of you and your kids playing in the backyard, on the playground or at the base pool. Send us your pics of your family exploring Teddy Roosevelt National Park or Medora! We want to see photos of you camping in one of North Dakota's State Parks, hanging out at the State Fair or watching a local baseball game! We want to see them ALL!



GRAND PRIZE

**(1) NIGHT STAY* &
(4) WATER PARK PASSES*
TO THE CANAD INN
IN GRAND FORKS!**



HOW TO ENTER

Submit your photo and who/what/when/where description on our website by using the QR code



RULES AND REGULATIONS:

- Winner will be chosen at random from the total pool of entries
- Every photo submitted will count as an entry but you may only submit (1) photo per day
- Contest runs from Memorial Day until Labor Day 2024
- Winner will be announced via email address provided in September 2024

- By submitting your photo in the contest you are giving permission to the Northern Sentry to use your photo for promotional items and for use in our newspaper, online edition and on our social media pages.
- Photos MUST be taken in North Dakota
- Contest is only open to Minot AFB assigned members and their dependents
- * Some restrictions may apply.



B-52H Stratofortress

Things to Love about Minot AFB

As many of us know, Minot Air Force Base tends to get a reputation as one of the less desired duty stations. However, many of the longtime residents and Minot enthusiasts would beg to differ. It's easy to get stuck on base and forget about all of the amazing things that Minot AFB and the surrounding areas have to offer, especially during the summertime. If you take a moment to get out of the house and experience what the base has to offer, Minot can turn into one of the best places to be stationed in the Air Force! Here are a few things to love about Minot AFB:

1. The Community

The close-knit, small-town feel is one of the most common reasons why people love Minot AFB. We all have to brave the cold together and we all definitely have to brave the demands of the mission in one way or another. The upside? We have a much smaller, more tightly knit community to lend support. There's something about living in Minot that brings people together.

2. The Recreation and Activities

Bases near large cities undoubtedly have a huge variety of activities, restaurants and social scenes. Despite its size, Minot AFB has tons of pastimes to get involved in, between the Spouses Club, 5th Force Support Squadron events, and many other local organizations that hold fun get-togethers for Air Force families. There are car shows for enthusiasts. There is a booming art scene in downtown Minot. There is a giant wildlife preserve just up the road, and there are many unique facilities on base to host every hobby. If there isn't a group that shares your interests yet, it's easy to reach out and find people to create a new one!

3. The Sunsets

The sunsets at Minot AFB bring extra special meaning to those unbearably windy days and long winters. Vibrant colors often explode across the sky and cast shadows beneath the towering clouds. With North Dakota's unending plains it's pretty easy to understand why the sunsets look so beautiful, especially in the summertime.

4. The Northern Lights

Just as beautiful as North Dakota's sunsets, this unique natural phenomenon is one that many people don't get to experience in their lives. While the Northern Lights are sometimes difficult to see on base due to light pollution or cloudy skies, a quick drive up the highway can offer up an incredible nighttime spectacle. If you're lucky, you'll even be able to catch a glimpse right from your back yard!

5. The Bombers

Sure, other bases may have planes and helicopters constantly flying overhead, and some may even catch a glimpse of the historic B-52 Stratofortress from time to time, but Minot AFB is one of very few installations that hosts one of America's longest standing planes full-time. There's something to be said about the feeling that many people get when they're outside doing yard work or driving down the highway when a BUFF roars overhead. It's majestic and impressive, to say the least.

There are a lot more things to love about Minot AFB if you just open your mind, get out, and look for them. As Brunella Costagliola, a former Team Minot resident, once said, "The military is not punishing us by sending us to Minot. On the contrary. The military was showing us how much they value and trust us by sending us here, where they know they will be able to count on you and your commitment to this powerful mission. We're not just military life resilient, but Minot AFB resilient. After all, only the best come north."



The Northern Lights



Best friends Molly, Lady & Briggs have made a strong doggy friendship, but like humans, down time is much needed.

Ansley Summerville Photo

Processing the PCS: The Spouses' Stages of Emotions

ERIN BEENE

Permanent Change of Station time is here. Military PCS is a mind and body experience that few outside the community can fully understand. The emotions are very real. The process elevates stress, frustrations, togetherness, longing, sadness, joy, excitement, anxiety, and countless other feelings. Analyzing the PCS experience could fuel the research of psychologists and reality show producers combined. However, in an effort to simplify the stages of the very real emotional range of the mil spouse in peak speed PCS season, from my own experiences and many lengthy discussions with others, I have compiled these into nine EMOTIONAL stages that may happen in any order. Maybe you can relate to a few?

1. Hopeful

The time has come! You are eligible for a move. Your spouse presents the list of possible assignments and places you may spend the next few years of your life. Conversations begin. You and your spouse compare and contrast locations, ops tempos, schooling options and life possibilities. You start to picture yourself in a few different places, living a few different lives. You are curious, slightly anxious, but hopeful that your spouse's assignment selection roulette wheel aligns his or her name to a base near the top of your dream sheet.

2. Investigating

You get the assignment notification. Whether your initial reaction is positive or negative, you deep plunge into finding out everything you need to know about the new location. You join spouses' Facebook groups for the new base. You start asking questions, looking into housing, discovering school regulations and finding out what fun activities exist there. You are intense, slightly worried, but determined and curious.

3. Decluttering

It's pre-PCS purge time! You get rid of basically everything: out with the tattered winter gear and rusty bikes. You daily line your curb with free items, hoping anyone comes to claim your junk. You refuse to be over TMO's weight limit! Your "to-do" list overwhelms you. You start next-level rage cleaning. You just want to get it all done and over with.

4. Exhausted

The house is empty and scrubbed, ready for the Housing Office final inspection. You have your last days with local friends planned. Last playdates and goodbyes are closing in, but not quite here yet. Your physical and emotional energy expenditures render you tired beyond belief. You are debilitated and not ready to keep pressing with this move, but you will... somehow.

5. Deeply Sad

The goodbyes and the final hugs from friends have you choking back tears. Kids are crying as they say "see you later" to friends who have shaped their lives. Support systems crumble and the realness of leaving is at its peak. Your life will never be the same. Tears roll down your cheek despite your best efforts. You are off to something new, and the despondency of this final farewell fills you with sorrow. You are intensely sad and that feeling encompasses you for a few hours or even days.

6. Exploring

On the road (or in the air), finally! The physical act of moving is an adventure. Once arrived, the possibility of what this new location can offer is intriguing. You spend your first few days driving around, house hunting and checking out local hot spots. You are learning, feeling out the "new you" in this new place. You are forming your initial impressions. Hesitancy with a touch of excitement fills some of the sadness in your soul.

7. Reality Check Realization

It hits you like a gut punch. This is it, you live here now. You have to get kids into school, activities and doc appointments to explain an entire life's medical history once again. You use a new acquaintance as your local emergency contact. You have to rapidly turn a new house into a home. Boxes are everywhere. You are broke from all the moving expenses. Your spouse has already reported to the new unit; they probably have a TDY already lined up since they have been gapping that position for several months. You aren't on vacation anymore; you've really got to create an entire life now from scratch. EVERYTHING is on you to do. Gulp...



Saying goodbye to friends is the hardest part of moving. Jenni and her husband give final hugs before departing Minot.

Jenni Fajardo-Dobbs Photo

Making military friends is so important in this lifestyle.

Tara Smith Photo

8. The Ultimate Bad Mood

Each and every spouse enters this stage at some point. It can last hours, days, weeks or months. It is the feeling of ALL of the PCS emotions mixed together. You are sad, overwhelmed, anxious, excited, concerned about the future, distraught over having no friends and just burned down to the core. The deep self-pity and even resentment toward your spouse of having to do this all over again soars. Now you have to get up and smile through meeting new possible friends, and finding out how to get to all the new places by yourself. This is the hard part. On the outside, you've got most everything done, but you still don't yet have a tribe or a sense of belonging or purpose here. You are present and going through the outward motions, but struggling on the inside. You are not a part of this new place yet, but you are not part of your prior place anymore either. This is the "fake it till you make it part", and it downright sucks.

9. Acceptance

You make a friend or two (it's a good chance you come across another spouse entering Stage 8 simultaneously as you). You have got into a rhythm with life and feel a little more settled. You have accepted this is where you are and will be for a few years. You have decided, sometimes inadvertently, to make the best of it. It's your life as a mil spouse and this is what we do. You take a deep breath, embracing gladness. Your PCS is finally over.

Fast forward a few years later..... You do it all again. But this time, you are now aware of the Stages of PCS Emotions, you are ready for it! (right?)

DON BESSETTE MOTORS

SERVICE DEPARTMENT

**FREE
CAR WASH**
with all service appointments
**+ ADDITIONAL
\$500 BONUS**
towards purchase or lease
For Active Duty, Reservist/National Guard,
Veteran, and Retired U.S. Military Personnel

**WE HAVE WHAT IT TAKES
TO KEEP YOUR VEHICLE
RUNNING
SMOOTH**

Super service at your SUPERSTORE

**10%
DISCOUNT***
on all regular priced services
*Maximum Discount on Services shall not exceed \$250.00

WITH COUPON EXPIRES 06/30/24
DON BESSETTE MOTORS | SERVICE DEPARTMENT

**\$10.00 OFF
NEW
BATTERY**
*no other discounts apply

WITH COUPON EXPIRES 06/30/24
DON BESSETTE MOTORS | SERVICE DEPARTMENT

**OIL CHANGE
SPECIAL***
Labor \$19.95 plus oil & oil filter
*no other discounts apply

WITH COUPON EXPIRES 06/30/24
DON BESSETTE MOTORS | SERVICE DEPARTMENT

**ROTATE &
BALANCE TIRES***
\$39.95
*no other discounts apply

WITH COUPON EXPIRES 06/30/24
DON BESSETTE MOTORS | SERVICE DEPARTMENT

**BRAKE
INSPECTION***
\$29.95
*no other discounts apply

WITH COUPON EXPIRES 06/30/24
DON BESSETTE MOTORS | SERVICE DEPARTMENT

WWW.DONBESSETTEMOTORS.COM

1715 N BROADWAY MINOT, ND
701-852-3300



April Rooks Photo

Everything you need for summer

Outdoor recreation provides Minot AFB with a variety of recreational equipment to make the most of your time here. From gardening and home care to camping and canoeing, Outdoor Recreation has everything you need to make this summer a blast.

Lawn and Garden

If you're looking to do some housework, Outdoor Recreation rents out lawn and garden tools to help. They offer ladders, lawn mowers, wheel barrows, rakes, shovels, power washers, and much more at affordable hourly, daily, and weekly rates.

Camping

Whether you're new to camping or are missing a few essentials, Outdoor Recreation has everything you need to have the best campsite out there. You can rent sleeping bags, two or six person tents, backpacks, ice chests, lanterns, A-frames, and more. Don't want to buy an expensive camper? Rent one, prices start at only \$75/day! They even offer camping packages, bikes and trailers to help you get outdoors and experience the best of North Dakota's scenery.

Boating, Fishing, and Hunting

Visit the on-base pools or go off-base to spend some time doing your favorite hobbies this summer with the help of Outdoor Recreation. They offer jet ski, canoe, kayak, boat, and fishing equipment rentals for a relaxing day at the lake. If hunting is more your speed, they offer a variety of decoys and hunting blinds to help you out.



Minot AFB Outdoor Recreation

Entertainment Equipment

It's easy to host the best block party when you can get your equipment so easily! For every event— family picnics, birthday parties, or work get-togethers— Outdoor Recreation offers tons of rentals to get you started. They have bouncy castles, dunk tanks, corn hole equipment, grills, horseshoes, ladder ball, and even sumo wrestling suits for some extra crazy fun. Tables and chairs are also available for rent.

Archery Membership

Why not start up a new hobby this summer? Outdoor Recreation sells single and family archery memberships that give exclusive access to the archery ranges and indoor simulator.

Garden Plots

If you don't have enough space in your yard for a garden, Outdoor Recreation has your back. Rent a garden plot for \$20 for the whole season (Late May-October) and take pride in your hard work with home-grown, fresh food!

Getaways

Not only does Outdoor Recreation offer equipment, but they have experiences as well. From tandem skydiving and camping trips to escape rooms to whitewater rafting adventures, they offer many affordable trips for Active Duty and dependents. For updates on upcoming trips and events, see their Facebook page.

Outdoor Recreation and the 5th Force Support Squadron work hard to provide Airmen and families with exciting, affordable activities year-round. This summer, get out of the house and experience all that Minot AFB and North Dakota have to offer you! Create lasting memories or find your new outdoor passion with Outdoor Recreation.

For more information on summer rentals, pick up a brochure at their location (146 Missile Ave, Minot AFB), check out their Facebook page at Minot AFB Outdoor Recreation, or visit www.5thforcesupport.com.



Inspired
minds.
Faithful
hearts.
Lives
of virtue.

A great education starts here.

Parents can count on Bishop Ryan Catholic School to be a place of faith and learning, and our student assessments prove it.

In the most recently reported results (2022-2023), 66% of our students performed at or above grade level in English Language Arts, and 73.5% were at or above grade level in Mathematics.

100% of our students participate in annual assessment testing.

In an environment built on academic, human, and spiritual formation, framed by virtue and discipline, our students are encouraged to grow, achieve, and give back to their communities.

At its heart, Bishop Ryan is a community of faith and family.

It's an exciting time to be a Bishop Ryan Lion; for more information about joining our lion pride, visit us online, give us a call, or stop in!



We're proud to be recognized as a national Cardinal Newman Society Catholic Education Honor Roll School and one of the top North Dakota schools in the most recent Cognia Accreditation Review.



2024-2025 REGISTRATION DEADLINE:

Students planning to start with the Fall 2024 semester must have application paperwork submitted by July 25th 2024.

BISHOP RYAN

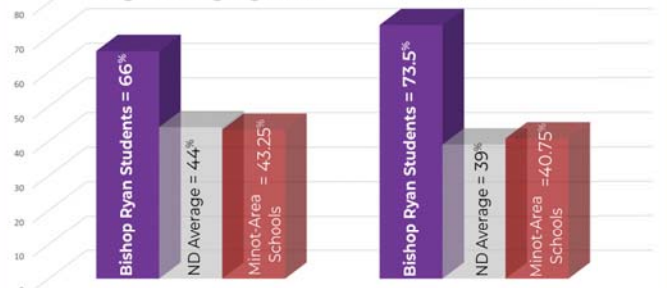
CATHOLIC SCHOOL

UNDER THE PATRONAGE OF THE SACRED HEART OF JESUS

www.bishopryan.com
(701) 838-3355

English Language Arts

Mathematics



Sources: Renaissance 360; <https://insights.nd.gov>
"Minot-Area Schools" includes assessment information from Minot Public Schools, Nedrose, South Prairie, and Des Lacs-Burlington.

Are you ready
to be a
LION?



LOCAL PARKS



Scandinavian Heritage Park

Dakota Bark Park

Minot, ND | 705 Highway 83 Bypass W
The Dakota Bark Park features three fenced in play areas as well as benches and convenient bags to pick up after your pooch.

Green Valley Park

Minot, ND | Souris Drive & 27th St SE
Green Valley Park features a Basketball Court, Tennis Court, Playground and Bathroom Facilities.

Hammond Park

Minot, ND | 8th Ave & 3rd St NE
Hammond Park features Basketball Courts, Tennis Courts, a Playground, Picnic Shelter and Restrooms.

Leach Park

Minot, ND | 2400 Block of 2nd Ave SW
Leach Park features Basketball Courts, Tennis Courts, Horseshoes, Playgrounds, a Picnic Shelter and Bathroom Facilities.

Moose Park

Minot, ND | 400 9th St SW
Moose Park features a Playground, Picnic Shelter, Sand Volleyball Court, Horseshoe Pit and Bathroom Facilities.

Oak Park

Minot, ND | 11th to 14th Block of 4th Ave NW
Oak Park features a Playground, Sand Volleyball Court, Splash Pad, Band Shelter, Amphitheater, Trails and Picnic Shelters.

Old Settlers Park

Burlington, ND | 305 Park Rd
Old Settlers Park features Camping, Baseball, Volleyball, Horseshoes and Fishing.

Polaris Park

Minot, ND | 712 26th Ave NW
Polaris Park is home to a disc golf course, playground, skate park, picnic shelter and a baseball field.

Radio City Park

Minot, ND | 37th Ave SE & 2nd St
Radio City Park features a Splash Pad, Basketball Court, Tball Practice Field, Playground, Picnic Shelters, Open Space and Restrooms.

Scandinavian Heritage Park

Minot, ND | South Broadway & 11th Ave SW | 852-9161
Scandinavian Heritage Center features, Picnic Shelters and Restrooms.

Roosevelt Park

Minot, ND | 1215 E Burdick Expy
Roosevelt Park features a Zoo, Swimming Pool, Sand Volleyball, Gardens, Picnic Shelters, Band Shelter, Playground, Magic City Express, Tennis Courts, Trails and Fishing Docks.

Velva City Park

Velva, ND | 112 2nd Ave W
The Velva City Park features Picnic Shelters, Tennis and HorseShoe Courts with a Walking Bridge connecting to the Recreation Complex including Softball, Football and Baseball Fields, Outdoor Swimming Pool and Modern RV Hookups.

Scandinavian Heritage Park

Midsummer Festival

June 21-23

free family fun

Get Your Viking On

This **two-day festival** celebrates the longest day of the year with evening bonfires, a Midsummer Pole, good food, a beer garden, music, arts & crafts, and kids activities.

You can enjoy vendors, demonstrations, workshops, games, and friendly competitions in this stunning 14-acre park.

scandinavianheritage.org

Visit 'Scandinavia'

a short drive from base

Only park in North America that represents Norway, Sweden, Finland, Denmark, & Iceland.

free admission

Park Open Daily

Buildings Open
May 17 - September

Gift Shop & Visitor Center
Open Mon - Fri from 9 - 5

Scandinavian Heritage Park
scandinavianheritage.org



MINOT PARKS

MOVIES

in the Park

all movies begin at sunset

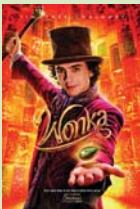
All movies are played at Oak Park and are free to attend!



MIGRATION
MAY 31, 2024
OAK PARK AMPHITHEATER



BARBIE
JUNE 28, 2024
OAK PARK AMPHITHEATER



WONKA
JULY 19, 2024
OAK PARK AMPHITHEATER



**MISSION IMPOSSIBLE
DEAD RECKONING**
AUG 2, 2024
OAK PARK AMPHITHEATER



**TEENAGE MUTANT
NINJA TURTLES**
AUG 23, 2024
OAK PARK AMPHITHEATER



NORTH DAKOTA ARTS

MSU Summer Theatre

Arts in the Parks

Minot, ND | Oak Park -305 4th Ave NW
www.minotarts.org

From mid-June through early August, this program offers something for all ages and interests in a relaxed outdoor setting. On Thursday evenings and Sunday afternoons and evenings, the Minot Area Council of the Arts hosts musical and visual arts presentations.

Artspace Suite 1 Gallery

Minot, ND | 3 Main St. S Suite 1

Hours: Thurs. & Fri. 2:30-5:30pm, Sat. 11am-4pm

From mid-June through early August, this program offers something for all ages and interests in a relaxed outdoor setting. On Thursday evenings and Sunday afternoons and evenings, the Minot Area Council of the Arts hosts musical and visual arts presentations.

Bismarck Art and Galleries Assoc

Bismarck, ND | 422 E. Front Ave | www.bismarck-art.org

Hours: Tues. - Fri. 10am-5pm, Sat. 1pm-3pm

Art gallery serving the Bismarck-Mandan area. With monthly exhibits of local, regional and national artists provided a wide spectrum of interests.

Bismarck Downtown Artist Co-op

Bismarck, ND | North 4th Street, Suite 202

www.bismarckdac.com

Hours: Thurs. 12-8pm, Fri. 12pm-6pm, Sat. 10am-4pm

Downtown Artist Cooperative is an art gallery and working studio space operated by and for local artists.

Bismarck-Mandan Symphony Orchestra

Bismarck, ND | 215 North 6th St

www.bismarckmandansymphony.org

Symphony orchestra serving central and western North Dakota.

Dakota Stage, Ltd

Bismarck, ND | 412 E Main Ave

www.dakotastageltd.com

Community theatre serving the Bismarck-Mandan area.

Fargo Theatre

Fargo, ND | 314 Broadway N

www.fargotheatre.org

Theatre which shows films and live performances and houses the Fargo-Film Festival.

Fargo-Moorhead Community Theatre

Fargo, ND | 6 Broadway N | www.fmct.org

Community theatre serving the Fargo-Moorhead area.

Fargo-Moorhead Symphony

Fargo, ND | 848 3rd Ave S

www.fmsymphony.org

Symphony orchestra serving the Fargo-Moorhead region.

Fargo-Moorhead Opera

Fargo, ND | 21 8th Street S. | www.fmopera.org

Opera company serving the Fargo-Moorhead region.

Greater Grand Forks Symphony Orchestra

Grand Forks, ND | www.ggfsso.org

Symphony orchestra serving Grand Forks area.

International Music Camp

www.internationalmusiccamp.com

Summer School of Fine Arts, in the International Peace Gardens. Study music, dance, creative writing, painting, drawing, etc.

James Memorial Art Center

Williston, ND | 621 1st Ave West

www.thejamesmemorial.org

Hours: Mon.-Thurs. 9am-2pm, Fri.1pm-5pm, Sat. Closed, Sun. 1pm-5pm Sept.-Apr. Closed Sun. May-Aug.

To share art and culture with the community of Williston, North Dakota while preserving the historic building known as The James Memorial Art Center.

Mouse River Players

Community Theatre

Minot, ND | 115 1st St. SE

www.mouseriverplayers.com

Mouse River Players is an all-volunteer community theatre organization. We are dedicated to providing live, quality theatre experiences, at an affordable cost, to the community of Minot and the surrounding rural areas.

NORTH DAKOTA ARTS



Burning Hill Amphitheatre

Medora Musical

Medora, ND | 3422 Chateau Rd
www.medora.com

Located behind the MSU Dome, MSU Summer Theatre performs multiple plays and musicals each June and July.

Minot Symphony Orchestra

Minot, ND | 500 University Ave W
www.minotsymphony.com

A university and community orchestra serving the Minot area.

MSU Summer Theater

Minot, ND | 500 University Ave W
www.minotstateu.edu/theatre

Located behind the MSU Dome, MSU Summer Theatre performs multiple plays and musicals each June and July.

North Dakota Museum of Art

Grand Forks, ND | 261 Centennial Drive
www.ndmoa.com

Hours: Mon.-Fri. 9am-5pm, Sat.-Sun. 12pm-5pm
Serves as the official art museum of the State of North Dakota. The Museum's purpose is to foster and nurture the aesthetic life and artistic expression of the people living on the Northern Plains.

Northwest Art Center

Minot, ND | 500 University Ave W
www.minotstateu.edu/nac/

Minot State University is home to two art galleries managed by the Northwest Art Center; one located in Hartnett Hall the other in the Library. Best known for its diverse contemporary and traditional art, The Northwest Art Center hosts exhibitions by local, regional, national, and international artists.

Plains Art Museum

Fargo, ND | 704 1st Ave N | www.plainsart.org

Hours: Mon. Tues. Wed. Fri. 11am-5pm, Thurs. 11am-9pm, Sat. 10am-5pm, Sun. Closed
Art gallery serving the Fargo-Moorhead region.

Sleepy Hollow Theatre & Arts Park

Bismarck, ND | 2899 E Divide Ave | www.shst.org
Summer theatre serving Bismarck-Mandan.



Sleepy Hollow Theatre & Arts Park

Taube Museum of Art

Minot, ND | 2 N. Main Street | www.taubemuseum.org
Hours: Tues.-Fri. 10:30am-5:30pm, Sat. 11am-4pm

The Taube Museum offers a full range of art classes throughout the year for kids aged 9 months through adults. There are also Paint the Town Red classes for adults who want to make a night of it with wine and instructed painting. Since there are two galleries, the main gallery & the lower gallery, the Taube is able to accommodate a vast amount of art. They also have a gift shop full of local art.

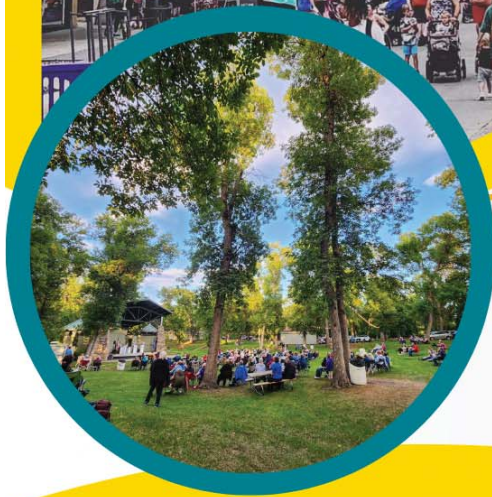
The Arts Center

Jamestown, ND | 115 2nd Street SW
www.jamestownarts.com

Hours: Mon.-Fri. 9:00am-5:00pm, Sat. 10:00am-2:00pm
Jamestown area arts organization. Providing a wide variety of arts activities, exposure and experience for every age group and skill level.



Minot Area
Council of the Arts



JOIN US

ARTS IN THE CITY

PRESENTED BY MINOT AREA COUNCIL OF THE ARTS



THIS SUMMER!

Sundays in the Park

- Every Sunday in Oak Park June 9th - July 28th
- Live Music at 4:00 and 7:00 PM
- Featured Artist and Live Art Demos!

Thursdays Downtown

- Weekly Live Music + Arts Festival on Main Street
- Food trucks, Artisan Vendors, Bounce Houses, Axe Throwing + More!
- Thursdays in June & August - Music Starts at 6:00 PM



NORTH DAKOTA HISTORIC SITES

Fort Union Trading Post

Chateau de Mores Historic Site

Medora, ND | 3426 Chateau Rd | 701-623-4355
A 26-room, 1883 hunting lodge built by the Marquis de Mores, an entrepreneurial French aristocrat who hoped to find his fortune in the Dakota Territory, overlooks Medora. His meatpacking business failed, but the town he named for his wife, Medora, prospered. The lavish home where he and his wife lived still contains many original furnishings. Eager docents stationed throughout Chateau de Mores State Historic Site offer insights and tours.

Fort Union Trading Post

Williston, ND | 15550 ND-1804 | 701-572-9083
Now reconstructed, Fort Union was the most important fur-trading site on the upper Missouri from 1828 to 1867. A self-guided tour, ranger-guided tours and living history programs are available for visitors.

Fort Totten State Historic Site

Fort Totten, ND | 417 Cavalry Cir | 701-766-4441
The Fort Totten State Historic Site got its start in 1867 when soldiers built a log structure that in no time was enlarged and expanded to include dozens of buildings. There is a lot more history to explore.

Fort Seward Military Post

Jamestown, ND | 605 10th St SW | 701-252-6682
An active military fort from 1872-1877, Fort Seward now houses an interpretive center displaying artifacts excavated from the site's archaeological digs. The grounds are also home to a Veterans' Memorial and scenic views of the James River Valley. Also, the largest United States flag on display in North Dakota flies here when weather permits.

Knife River Indian Villages

Stanton, ND | 564 County Rd 37 | 701-745-3309
Explore a reconstructed, furnished Hidatsa earth lodge, 15 miles of trails and a museum. A rich culture thrived along the banks of the Missouri River in west-central North Dakota when Meriwether Lewis and William Clark arrived in 1804. Today, trails weave through the sage and wildflower-dappled prairie to the remains of villages, including one where Sakakawea lived before she joined Lewis and Clark.

Lewis & Clark Interpretive Center & Fort Mandan Historic Site

Washburn, ND | 2576 8th St SW | 701-462-8535
Meriwether Lewis and William Clark spent more of their epic journey in North Dakota than in any other state. Stop first at the striking Lewis and Clark Interpretive Center and take in its exhibits about the expedition and area history. Then, continue to a replica of the fort, authentically reconstructed with 800 cottonwood logs, where the explorers weathered the brutal winter of 1804-1805.

Fort Buford State Historic Site

Near Williston, ND
Here, where two great rivers meet, people have gathered for thousands of years. At the Missouri-Yellowstone Confluence Interpretive Center, take in the history of a place little changed since Lewis and Clark visited two centuries ago. At nearby Fort Buford, tour original and reconstructed building of the military post where Sitting Bull laid down his rifle.

Ronald Reagan Minuteman Missile State Historic Site

Cooperstown, ND | 555 113th 1/2 Ave NE
701- 797-3691
The Ronald Reagan Minuteman Missile State Historic Site consists of two sites telling the story of the Cold War years in North Dakota; Oscar-Zero Missile Alert Facility and the November-33 Launch Facility. They are the last remnants of the 321st Missile Wing, a cluster of intercontinental ballistic missile launch sites that were spread over a 6,500-square-mile area around the Grand Forks Air Force Base. Both played an integral part in the Cold War in North Dakota and the world.

Fort Abraham Lincoln Custer House & Commissary Bookstore

Mandan, ND | Fort Abraham State Park
701-667-6340
Guided tour of Gen. George and Libbie Custer's home. Self-guided tour of Fort Abraham Lincoln, home of the 7th Cavalry. Commissary Bookstore houses a large collection books about Custer and the history of Fort Abraham Lincoln.



Former Governors' Mansion

Fort Abercrombie

Abercrombie, ND

Fort Abercrombie once served as a gateway to the West and the spear point of the army's advance into the Northern Plains. The original guardhouse and the reconstructed blockhouses and stockade attest to the bloody conflict that spilled into the Dakotas from Minnesota. Explore the buildings and visitor center.

Fort Stevenson Guardhouse

Garrison, ND | 1252A 41st Ave NW | 701-337-5576

The Guardhouse Interpretive Center was reconstructed to tell the story of the frontier military history of Fort Stevenson. Step back in time and experience military life during Frontier Military Days held each year the fourth weekend in June.

Camp Hancock

Bismarck, ND

Before Bismarck, there was Camp Hancock. Once a bustling military supply post and later a weather station, Camp Hancock is now home to the oldest building in Bismarck as well as an 1881 church and locomotive from the glory days of steam transportation.

Former Governors' Mansion

Bismarck, ND

Explore the home of 20 former governors and their families at the Former Governors' Mansion. A lovely staircase leads from the public rooms to private areas where children played, servants worked, and families enjoyed privacy from 1894 to 1960. A carriage house on the lot features exhibits from the time the house was occupied.



RESTAURANT/BAR HOURS

11 AM TO 11 PM
TUESDAY-SUNDAY

**KIDS
WELCOME!**

• 24 HOUR BAIT & RESTROOMS

• BANQUET/MEETING ROOMS

PHONE 701.337.2070
1412A HIGHWAY 83 NORTH, COLEHARBOR, ND 58531



EXPLORE MEDORA

Medora, North Dakota may only have a population of 130 people, but it holds an immeasurable impact on those who visit. Nestled between the rugged buttes of Theodore Roosevelt National Park and the bright lights of the city, Medora offers a unique blend of experiences that make it one huge destination.

The vastness of the horizon is one of Medora's most defining features. With its rolling prairies and towering buttes, the landscape is nothing short of breathtaking. It's no wonder that a young Theodore Roosevelt was captivated by the beauty of the area, which later led to the establishment of Theodore Roosevelt National Park. The way the horizon expands in Medora is awe-inspiring and has the power to leave visitors feeling both humbled and empowered.

But Medora's charm extends beyond its natural beauty. The town itself has a unique character that draws people in. Despite its small size, there is always something going on in Medora. The summer months are especially busy with nightly performances at the Medora Musical, which has been entertaining audiences for over 50 years. The show is paired with the Pitchfork Steak Fondue which is just like it sounds, great big pitchforks loaded up with steaks and deep fried cowboy style are the star of the evenings menu. The experiences of Medora expand deep into the world of history where visitors can take in the sights at the North Dakota Cowboy Hall of Fame or learn about the namesakes of the town at the Chateau de Mores State Historic Site.

Medora buggy rides in Downtown Medora
ND Tourism photo

One of the best things about visiting Medora is the way time seems to slow down. Afternoons move at their own good time, giving visitors the chance to soak in the beauty of their surroundings and disconnect from the hustle and bustle of everyday life. It's a chance to unplug and appreciate the simple things in life, like a warm summer breeze or the sound of birds chirping in the distance.

Medora is the perfect year-round destination for travelers. In the fall, visitors can enjoy the breathtaking views of the changing leaves, the slower days and crisper air of a stroll through town. Plus, a special Broadway style show playing at the Old Town Hall Theater in September and October. Winter, brings a peaceful winter wonderland with snowcapped Badlands, a roaring fire at the Rough Riders Hotel, and delectable food at Theodore's Dining Room. Spring brings new life to Medora, with a great view of wildflowers and baby animals, perfect for hiking, biking, and horseback riding. Bully Pulpit Golf Course also welcomes golfers mid-April. No matter the season, Medora offers a unique blend of natural beauty, small-town charm, and year-round activities, making it the perfect destination any time of year.



While Medora may be a tiny dot on the map, it holds a big place in the hearts of those who visit. The memories made in this small town are larger than life, and the impact of the experience is immeasurable. From the stunning natural beauty to the unique character of the town, Medora offers a one-of-a-kind vacation that is sure to leave visitors feeling rejuvenated and inspired.

In a world where bigger is often perceived as better, Medora proves that sometimes the most extraordinary experiences can be found in the most unexpected places. So why not plan your next vacation to this little town with a big heart? With 1883 reasons to visit, there's never been a better time to discover the magic of Medora.

MEDORA

Musical

Medora is a **MUST** ERIN BEENE

Medora, both the town and its renowned musical, is the 'Pride of North Dakota!' You will be amazed with the natural beauty and state pride that resonates from this small town. If you are like me, from a large and very proud state (ahem Texas), then thinking that any other state -especially one as seemingly obscure as North Dakota- can have state pride is unimaginable. However, if you still think that, you haven't yet attended the world-famous Medora Musical in its purpose-built outdoor amphitheater set amidst the badlands of southwestern North Dakota. It will change your mind.

Located just west of Dickinson, and not too far from the South Dakota and Montana borders, is the town of Medora, North Dakota, population 129. The entire town encompasses less than one square mile, but the quaint feel will make any one feel at home and maybe start to fall in love with the state. Medora town offers a few blocks of 'mom and pop' restaurants, historic sites and intriguing shops. The shops are more than your average gift shop, including lots of hand-crafted and made-in-state items from local vendors. I fell in love with handcrafted vases made from trees and unique spiral candles. If you need (or want) North Dakota items, Medora is the place to go! The completely-walkable town is only a block or two but is packed with things to do. It has the most amazing log and fort playground for the kids. This maze-like play structure has sand pits with toys, a special area just for toddlers, plenty of stairs and obstacles for climbing kids and includes shady places for parents to sit. Plus it is located right next to the free public bathrooms. Next to that, is a fun perk for all ages, the Theodore Roosevelt National Park themed, Medora Mini Golf. Right next door is also the "Point to Point Park," which features a free splash pad, kids ziplines, pickleball courts and a bounce pillow. For a fee there is also a luxurious pool with a lazy river and a larger zipline for those who dare.

While there is plenty to do in the tiny town, there are only a few places to stay within the town itself. Since Medora hosts only local accommodations (no chain hotel or restaurants in sight), the center of town is home to the Badlands Motel. This motel is perfectly located to walk to all Medora attractions (besides the Musical) and is so close to the playgrounds and Point Park that kids and parents alike will love the ease. The motel is updated, offering the comforts of any hotel but with the amenities so nearby it almost has a resort feel. The photos posted online don't do this place justice, and the lobby has free coffee and lemon-infused water for its guests. Since camping is so popular with the state, I would be remiss not to also mention the Medora Campground located just out of town. This beautiful campground has all types of sites and the cottonwood trees and beautiful nature to accommodate it. It also has a playground and basketball court, plus a small store for camping items and is a very short walk to the city swimming pool. While a drive (and parking) will be required when visiting the town, the campground is the perfect stay for those who love the outdoors.

Finally, any stay in Medora would not be complete without a visit to the Musical! This Broadway-like performance may seem a bit out of place in a tiny town in North Dakota, but once you visit, you'll get it. The amphitheater is placed high on a butte with gorgeous views of the landscape, and when the sun sets it offers the viewers an open-skied image that looks like a painting. Besides the breathtaking views, the Musical is filled every year with The Burning Hills Singers, an ensemble of some of the best singers/dancers from all over the country. This group of a dozen performers really will knock your socks off with professional-level talent. The Musical is slightly different each year, and always offers new performers and hosts to entertain all ages. In 2022, they featured renditions of classic country songs that had the entire 1000+ seat amphitheater smiling and swaying along. Besides the musical sensations and live music performances, the Musical features several entr'acte performances which entertain for a few weeks during the summer. This year's guests haven't been announced yet, but you can be sure they will be sure to have you cry-laughing, I know they did last year.

As the under two-hour show comes to an end, guests are treated to the dusk sky and sparkling lights lighting the MEDORA sign backdrop. The entire night is magical, impressive and worth it to go back year after year! This in itself will awe any North Dakota skeptic that doubts there is anything spectacular about this state. I almost teared up at the overwhelming beauty, love, and joy that this musical brings.

All in all, Medora is one of North Dakota's proudest places! Something about the quaint small town, filled with smiling residents, simple, yet enjoyable activities meshed with the natural beauty of the surroundings and the light breeze that always passes through North Dakota, makes Medora an enlightened vacation spot for everyone. Don't let your time in Minot pass without a visit (or two or three) to this lovely town full of North Dakota pride!

The Musical also loves their military guests and offers a whopping 50% off to military and dependents all summer long! If that's not enough to get you down there, kids are completely FREE on Wednesdays and Sunday evenings. You have officially run out of excuses to not make it down and experience Medora and the Musical this summer!



Veterans Day Event



EXPLORE MEDORA

Teddy Roosevelt National Park Bison

Medora is located in the Badlands of North Dakota. Plan a vacation to this historical town and enjoy the beautiful scenery it has to offer. Theodore Roosevelt National Park is an outdoor enthusiasts dream offering amazing bike and hiking trails, camping and relaxation.

Family Fun Center

No family trip to Medora would be complete without an afternoon spent at the Family Fun Center! The kids can have a blast on our massive Inflatable Water Slide, catch some air on the bungee jump, scale a kid-friendly rock wall, or soak each other in Water Wars -- a water balloon sling shot stand off!

Bully Pulpit Golf Course

Some courses impose themselves on the landscape, but at Bully Pulpit Golf Course you'll find yourself climbing through meadows and woodlands and meandering along the Little Missouri River, fully immersed in the beauty of the landscape all around you! As you climb out of the shadow of the bluff on thirteen green, our signature holes await. "The Badlands Holes" number 14, 15, and 16 will take you through a rugged fairway gorge. From butte-top tee boxes to a green among a sea of Badlands, this is one golfing adventure you're not soon to forget.



Bully Pulpit Golf Course

Every evening our chefs load steaks onto pitchforks and fondue them western style. Savor your steak as you overlook the picturesque Badlands from atop a bluff at the Tjaden Terrace. Your steak comes with all of the fixin's. Plus, you'll be serenaded with western melodies performed live by members of The Coal Diggers from the Medora Musical. Don't miss this unique dining experience that was featured on the national television show, Best Of, on The Food Network!

The Medora Musical

The Medora Musical is the rootin'-tootiest, boot-scootiest show in all the west! There's no other show quite like it. Set in the outdoor splendor of the rugged North Dakota Badlands, this professionally produced, high energy, western-style musical show is proudly dedicated to the legacy of America's 26th President, Theodore Roosevelt, and the time he spent here in the Badlands of the Dakota Territory.

Teddy Roosevelt National Park

Encompassing over 70,000 acres of breathtaking North Dakota Badlands, there's an adventure for everyone at TRNP. For starters, drive through the south unit of the park on the 36-mile scenic loop through the buttes and Badlands. The winding drive features striking overlooks with unbelievable views, trailheads for 12 different hiking trails (more on those below), interpretive signs about the Park's history and natural wonders, and real prairie dog towns -- plus, you might even get a close up with a buffalo! Experience this unique wilderness through daily Ranger programs which include short talks, guided walks, tours of Roosevelt's Maltese Cross Cabin and evening programs at the campground amphitheater. Or set out on an experience all your own!

Theodore's Dining Room

Enjoy this fresh culinary experience in a historic and elegant atmosphere. You will be in the well-trained hands of our executive chef. Whether you're craving a scrumptious steak, or a refreshing after dinner drink, stop at Theodore's and treat yourself.

All taste buds are treated equal at Theodore's. From fresh garden salads and delectable brussel sprouts, to bacon-wrapped steaks and tantalizing buffalo osso bucco, Theodore's Dining Room has something for everyone!

Medora Musical™

June 5 - September 7, 2024

Get your tickets at [MEDORA.COM](https://www.MEDORA.COM)



DEALS TO KNOW!

Kids 17 & Under FREE
June 5-18 | July 4
All 5:30 Shows
Every Wednesday
& Sunday

Seniors
15% off Tuesday
& Thursday

**Active Military,
Spouses, & Dependents**
50% off daily

**Veterans, Reservists,
& Active Military**
FREE July 14

Bully Pulpit™

GOLF COURSE

Military
Special 18 hole rate
\$69 + taxes & fees

Senior
18 Holes Monday -
Thursday
\$95 + taxes & fees

Juniors golf FREE
Sunday through Thursday
FREE ALL DAY
Friday and Saturday
FREE after 3:00 PM

SUNRISE TO SUNSET

Book your tee times at [MEDORA.COM](https://www.MEDORA.COM)

Medora™
EXPLORE IT. ADORE IT.

YOUR FIRST STOP

on the way to the lake

- Bait & Tackle
- Green Mountain Grills
- Toro Mowers
- T & E Tools



TORO



Tool Surplus Center
Best prices on tools in the state!



Rental Equipment
Available!

**Full-Time Outdoor
Power Equipment
Mechanic On-Site!**

Small equipment in need of repair?

Call us!

EXCELPOWERBIKES



26" Step-Thru Fat Tire

- up to 50+ mile range
- max speed 20 MPH



1619 HWY 83 NW, GARRISON, ND

Intersection of Hwy 83 & Hwy 37

701.337.2500

find us on **facebook**

www.hwy83llt.com

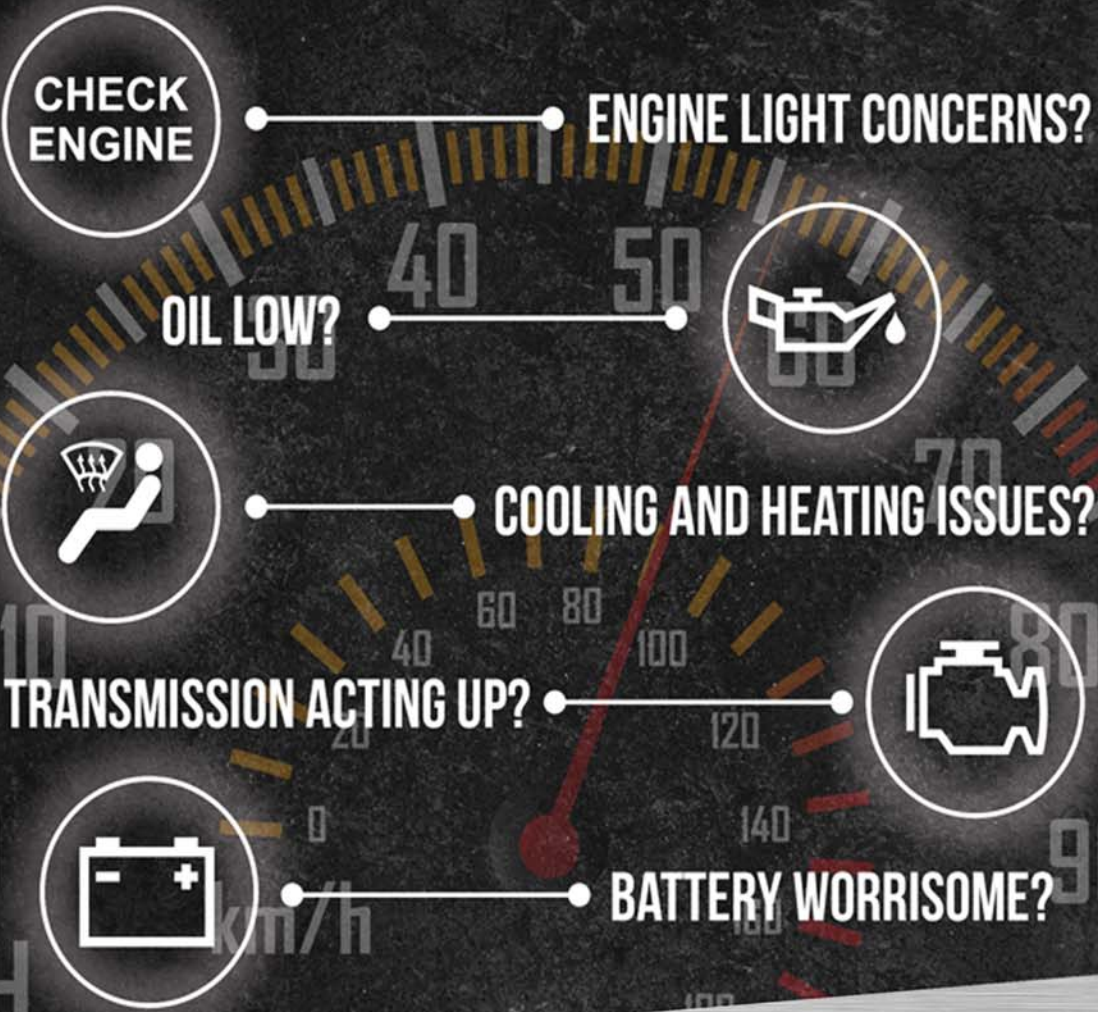
HOURS:

Monday - Friday:
5:30 a.m. - 5:00 p.m.

Saturday:
5:30 a.m. - Noon

Now Open Sunday
8:00 a.m. - 2:00 p.m.

WHO DO LOCALS TRUST FOR THEIR AUTO CARE NEEDS? ...



YOU CAN DEPEND ON YOUR HOMETOWN EXPERTS TO SERVE ALL YOUR CAR CARE NEEDS IN MINOT.



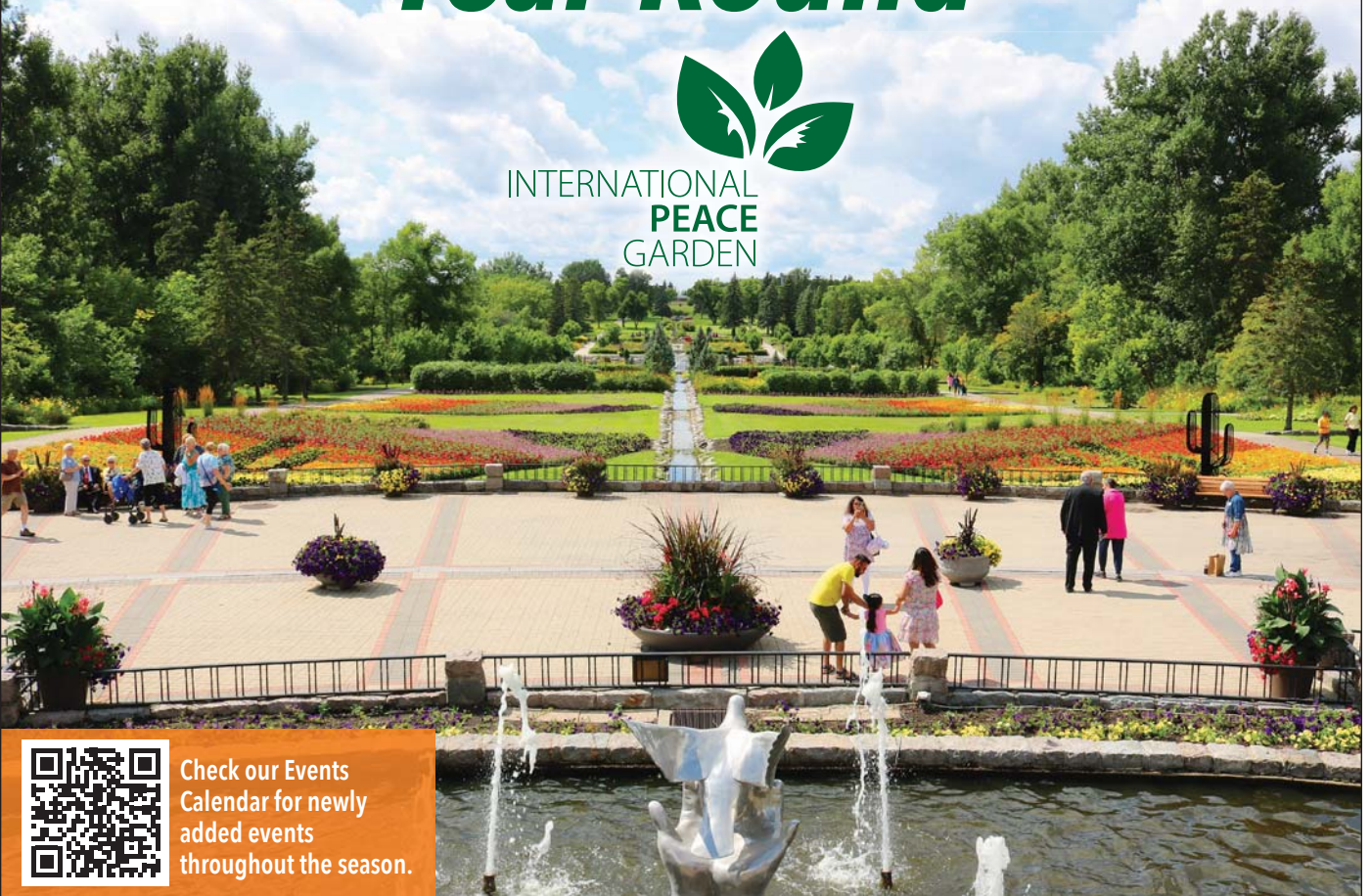
Auto Care - Valvoline Instant Oil - Tires
Minot | 1301 20th Ave SW | 701-837-1301
Minot AFB | 61 Missile Ave | 701-727-4141



NATURE BLOOMS Year-Round



INTERNATIONAL
PEACE
GARDEN



Check our Events Calendar for newly added events throughout the season.

Nestled in the Turtle Mountains on the Canadian/US border, the International Peace Garden shines in all seasons. Home to over 100,000 flowers and plants, you can see greenery inside the expanded Conservatory or the 2,400 acres of woodlands, prairie, lakes, and trails. Discover how plants and peace work together in harmony.

Newly Expanded Conservatory - one of the world's most diverse collections of cacti and succulents 🌿 **Children's Nature Play Area - Animal Habitat Zones**



Stay Any Season



Discover Our Trails



Families Gather Here



peacegarden.com • 1-888-432-6733





NORTH DAKOTA GARDENS

International Peace Garden

Angelic Garden

Minot, ND | 6200 11th Ave SE | 701-500-7713
Venture through the Walk Through Victorian Garden or visit the Produce garden and Pick your own produce! This ensures that very little goes to waste and that you produce is as fresh as it can possibly be.

Dakota Sun Gardens and Winery

Carrington, ND | 955 73rd Ave. NE | 701-674-3316
Dakota Sun Gardens and Winery has many wines made on site available for tasting and purchase. The wines are also sold at many North Dakota bottle shops. We use as much locally and regionally grown fruits and grapes as possible. The winery is always interested in fruit purchase from other growers. Our extensive gardens and water features exhibit flower and shrubbery displays using natural rock, driftwood, and metal sculpture as accents. Meetings, groups or individuals may be arranged, with prior reservations. Beautiful garden wedding venue. The nominal per person charge includes guided garden tours and wine tastings.

Elaine's Garden and Guesthouse

Balfour, ND | 3238 Highway
A beautifully restored 1915 home with a large porch, veranda, theme-decorated bedrooms, completely furnished for all overnight guests as well as hunters. Acres of hunting land and a warm place to clean your birds. Added attraction on the farm site is a restored one-room schoolhouse and beautiful gardens during the growing season.

Floral Flag Display

International Peace Garden | 10939 Highway 281
The Floral Flag Display is the only display remaining the same each year. The American red, white and blue, stars and stripes and the Canadian red Maple Leaf are located in the Formal Garden area.

International Peace Garden

15 Miles North of Dunseith, ND | 701-263-4390
Since 1932, nestled in the Turtle Mountains of North Dakota and Manitoba, the International Peace Garden is one of the continent's most symbolic and scenic attractions. Thousands of tourists flock to this unique tribute to peace and friendship between the United States of America and Canada. The park plants over 150,000 flowers each year. Main features of the garden include an 18-foot floral clock display, fountains, a chime, and twin 120-foot concrete towers straddling the border with a peace chapel at their base. The Arma Sifton bells were a gift from Central United Church of Brandon, Manitoba, in 1972. The tower was supplied by North Dakota Veterans and dedicated in 1976. Some building remains of the World Trade Center attacks of September 11, 2001, have been placed in part of the garden. The International Peace Garden, "Like No Other Place on Earth," is a perfect and memorable retreat, where people and nature meet.

Japanese Garden

Grand Forks, ND | 11th Avenue and 34th Street
701-746-2750
This lovely and unique garden - featuring the beauty of rocks, water, hills, trees and plants - graces the landscape of Sertoma Park. A gift from the residents of Grand Forks' sister city, Awano, Japan, it commemorates the recovery from the 1997 Red River Valley flood.

Rainbow Garden & Sculpture Walk

Mayville, ND | 367 3rd St SW (HWY 200)
Rainbow Garden has seven plots, each demonstrating a different theme. Their goal is that the variety in the gardens gives visitors ideas for their own yards. The seven gardens are The English Garden, The White Garden, The Cottage Garden, The Rock Garden, The Children's Garden, The Herb Garden, and The Labyrinth. Since they have become fairly competent at the craft of gardening, they have graduated to the art of design by concentrating on color, texture, shape and arrangement. They are building a collection of commissioned sculptures from artists around the nation. Currently there are 15 sculptures and poems in the Sculpture Walk.

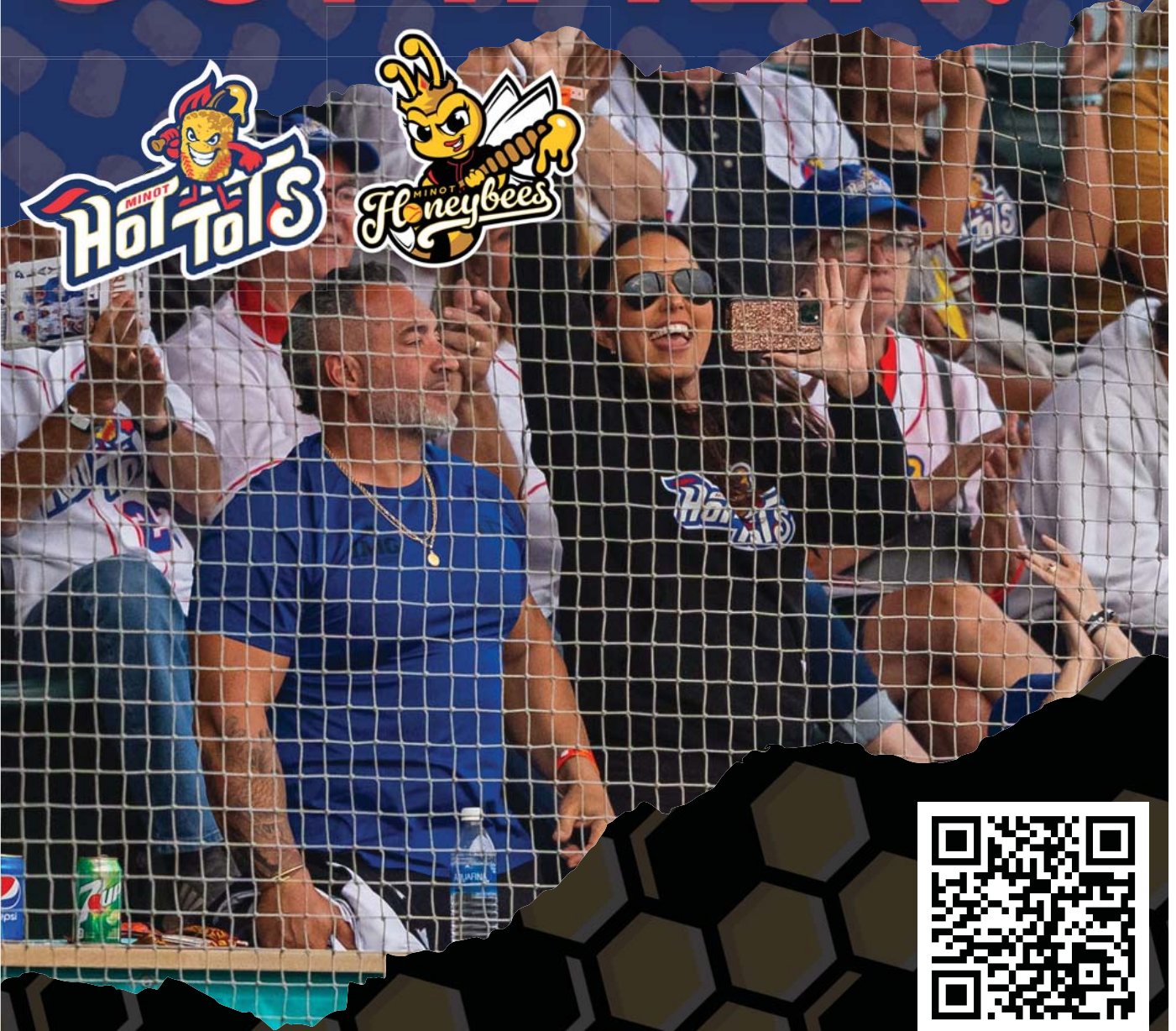
Sunken Garden

International Peace Garden | 10939 Highway 281
Interestingly, a series of five uniform terraces extend down to the Sunken Garden area. Located in the center of each terrace are small pools that have connecting water channels that spill into each pool on the next level. So ultimately, water flows from one ornamental pool on each terrace to the next, and finally down to the reflecting octagon shaped pond in the center of the Sunken Garden, where the water is pumped back to the first terrace to begin its round again! Along the mazed walkways of The Sunken Garden are two stone garden houses financed by the North Dakota and U.S. National Homemakers' Clubs. The placement of these original houses marks the Avenues of America and Canada and both leads to their respective countries. Thousands of perennials, flowering shrubs and annuals fill the mosaic-like beds surrounding the focal pond in the Sunken Garden. Within walking distance is the Interpretive Center housing the cafe, retail store, moderate horticultural library and conservatory.

Northern Plains Botanic Garden

Fargo, ND | 1201 28th Ave N | 701-281-2568
Open throughout the year from sunrise until sunset and free to the public, the Botanic Garden is an incredible destination for those in the entire region. It consists of 7 separate gardens including the Woodland Garden, Alerus Financial Butterfly Garden, Chrysanthemum Test Garden, Alphabet Garden, Rain Garden, The Turnaround Garden, Seeds of Opportunity Garden and a humming bird patio. The next project slated is the development of the Garden of Mind which is a Japanese-style garden.

GAMES ALL SUMMER!



GET TICKETS TODAY



NORTH DAKOTA SCENIC DRIVES

Turtle Mountain Scenic Byway

Chan SanSan Scenic Backway

Begins at Highway 46 and continues south through Adrian, Dickey, Grand Rapids and LaMoure to the intersection of the County Line Road.

Des Lacs Scenic Backway

Begins at US Highway 52, 6 miles south of Kenmare and continues to the north end of the refuge where it terminates at the intersection of Ward County Road 1.

Points of Interest

- Historic Danish Mill: Built in 1902 on a homestead, the Mill was used by area farmers for grinding grains into flour. Now located in the center of the Park on the Square in Kenmare.
- Des Lacs National Wildlife Refuge Visitor Center: The visitor center at Des Lacs National Wildlife Refuge Headquarters features displays of local history and native wildlife.
- Munch's Coulee National Recreation Trail: From this trail, excellent bird watching opportunities abound.

Enchanted Highway

Just off of 94 (Exit 72) approximately 20 miles east of Dickinson, ND. Here you will find six sculptures (The Tin Family, Grasshoppers in the Field, Pheasants on the Prairie, Teddy Roosevelt Rides Again, Geese in Flight and The Deer Family) that are spread out along the 32 miles. The works of art are created by Gary Greff, a native of Regent, North Dakota. Make sure to stop in Regent, ND at the Enchanted Highway Gift Shop, the Hettinger County Historical Museum and the Enchanted Castle.

Killdeer Mountain Four Bears Scenic Byway

Begins north of Manning on Highway 22 through Killdeer to Highway 23, then east to New Town.

Old Red Old Ten Scenic Byway

Begins at the Mandan Depot on Main Street in Mandan and travels west along Old Highway 10 to Dickinson. There is a 12-mile section of gravel road near Almont known as the Curlew Loop. Caution: 12-foot railroad underpass 11 miles west of Hebron.

Rendezvous Region Scenic Backway

Begins on Highway 55 in Vang proceeding east to Walhalla, turning southeast for 22 miles traveling past Icelandic State Park to Highway 5 ending in Cavalier.

Sakakawea Scenic Byway

This byway highlights fantastic views of the Missouri River Valley along with some of the state's most outstanding Lewis and Clark destinations. Visitors are able to follow the course of this great journey and discover the history and culture of the people who lived in the rolling hills and wooded valleys of the Missouri and Knife Rivers. Begins at Highway 200A from Washburn to Stanton.

Points of Interest

- Fort Clark State Historic Site: protects the archeological remains of a large earth lodge village, cemetery, two fur trade posts, and was the scene of devastating smallpox and cholera epidemics that decimated most of the inhabitants of a Mandan and later an Arikara Indian village.
- Fort Mandan Historic Site: The reconstructed Fort Mandan rests in the riparian forests of the Missouri River and features refurbished rooms filled with the equipment of the Lewis & Clark Expedition. On-site interpreters provide programs and year-round tours of Lewis & Clark's 1804-1805 wintering post.

Sheyenne River Valley National Scenic Byway

Begins at Getchell Township Hall on Barnes County Highway 21, along Highways 17 and 19, through Valley City, proceeding on Highway 21 to Ransom County Highway 13 to Lisbon.

Standing Rock National Native American Scenic Byway

Begins at the Cannonball River and continues south along Highways 1806 and 24 to the South Dakota state line.

Theodore Roosevelt National Park North Unit Scenic Byway

This byway provides the colorful North Dakota Badlands as a scenic backdrop with its sweeping vistas of one of the last remnants of wilderness in the Northern Great Plains. Theodore Roosevelt National Park memorializes the 26th president for his enduring contributions to the conservation of our natural resources. Visitors are provided a unique opportunity for wildlife viewing. In the park you will find open prairie, hardwood draws, bison, other wildlife, and the Little Missouri River. Begins 15 miles south of Watford City from US Highway 85 and proceeds west on the scenic drive through the North Unit of the park.

Turtle Mountain Scenic Byway

Begins 3 miles north of Rolla to St. John and proceeds west on County Highway 43 to State Highway 281. Continues west on State Highway 43 until it terminates on State Highway 14.



NORTH DAKOTA TRAILS

Lake Metigoshe

Beaver Lake State Park

Trails: Beaver Lake Nature Trail, Old Settlers Trail, Woodland Trail, Moraine Loop Trail, Lake View Loop Trail and Rolling Prairie Loop Trail. Beaver Lake State Park's non-motorized trail system covers 5.34 miles in a series of loops and several connecting segment trails that are open for hiking and biking. The Beaver Lake Nature Trail is a self-guided nature trail open to hiking only. Most of the trail system surface is either grass, dirt or hard-packed single-track, with manageable grades with only a few steeper sections.

Bison Plant Trail

This is Minot's little jewel, located a few miles east of Minot off of Highway 52. The 3.5 mile trail is now entirely comprised of single track trail looping through a beautiful stash of city owned wooded land. It offers excellent shade and varies from fast hard pack dirt cruising sections to tight technical sections. Its location just outside of town makes it a great place to go pump out a couple laps after work. There is also a shorter variation of the trail (2.1 miles) used for running. All trails are well maintained.

Black Butte Adventures Trail

Located near Sawyer, this is a beautiful ride that traverses pasture land above the river and climbs over Black Butte. The trail is a tight single track with occasional rock technical sections, and one muddy water crossing. The main loop is about 5 miles and there is a secondary 3 mile loop across the cattle guard in the southwest.

Burlington Walking Path

The Burlington Walking Path is a paved trail through rural, rolling countryside that connects the cities of Minot and Burlington in north-central North Dakota. It parallels County Road 15 for most of its length, which becomes 4th Avenue as the trail approaches Minot.

Cross Ranch State Park

Trails: Matah "River" Trail, Ma-ak-oti "Old Villiage" Trail, Cottonwood Trail/Gaines Trail, Levis Trail and TNC Self-Guided Prairie Trail. Situated along the west bank of the Missouri River, the 589-acre Cross Ranch State Park and adjacent 6,000-acre Cross Ranch Nature Preserve are one of the few areas in North Dakota to offer a true primitive outdoor experience. Over 16 miles of trail wind through Cross Ranch State Park and Nature Preserve. Trail posts identify the trail names.

Fort Abraham Lincoln State Park

Trails: Scouts Trail System, Little Soldier Loop Trail, Young Hawk Interpretive Trail, Bob Tailed Pass, Little Sioux Trail, Bloody Knife Trail and Nature Trail. Fort Abraham Lincoln State Park's non-motorized trail system covers approximately 6.75 miles in a series of loops and several connecting segment trails that are open for hiking, biking and horseback riding. Most of the trail system surface is either grass, dirt or hard-packed single-track, with manageable grades with only a few steeper sections.

Fort Ransom State Park

Trails: North Country National Scenic Trail, Redetzke Ridge Trail, Pederson Hills Trail, North Fork Trail, Nelson 80, Firebreak Trail, Little Twig Nature Trail, Ridgeline Nature Trail, Valley View Trail, Oak Ridge Trail, Meadow Run Trail, Riverside Trail and Southgate Trail. Fort Ransom State Park's non-motorized trail system covers over 14.64-miles in a series of loops, trails and connecting segment trails most which are multi-use and are open for hiking, horseback riding, biking, cross country skiing and snowshoeing. The majority of the trail system surface is either grass, dirt or hard-packed single-track, with manageable grades with only a few steeper sections.

Fort Stevenson State Park

The park offers 8.13 miles of non-motorized, multi use trail which provides a pleasant place to bike, walk, jog and cross country ski. This includes a .22 mile interpretive trail and a .48 mile arboretum trail.

Grahams Island State Park

Grahams Island State Park has two trails for hiking or walking. One is a 1.6 mile loop that can be accessed by the Sivert Thompson activity center. The other is a .5 mile loop located on the north end of the west campground.

Icelandic State Park

A 3/4 mile self-guided interpretive trail begins at the Gunlogson Homestead site and loops along the south side of the Tongue River. Other trails continue throughout the 200 acre Gunlogson Nature Preserve and natural wooded area along the river. Foot bridges provide easy crossing of the Tongue River and the area's many natural springs. The majority of this 3 mile trail system is groomed and open in the winter for cross-country skiing. A 6 mile paved bike and hiking trail connects the park to Cavalier and to the golf course just west of the park.



Little Missouri State Park

Lake Metigoshe State Park

Trails: Old Oak Trail and Multi-Use Trails
Nestled in the scenic Turtle Mountains, on the shores of Lake Metigoshe, Lake Metigoshe State Park was constructed by the Works Progress Administration (WPA) in the 1930s and is one of the most popular year-round vacation spots in North Dakota.

Lake Sakakawea State Park

Several multi-use trails in the park are perfect for hiking, biking, cross-country skiing and snowshoeing. Hikers are encouraged to take in the scenic beauty of the completed segments of the North Country National Scenic Trail found in this park.

Lewis and Clark State Park

Trails: Prairie Nature Trail, North Trail System, South Trail System and Shoreline Trail
On the north shore of Lake Sakakawea, Lewis and Clark State Park is situated among the rugged buttes of the North Dakota Badlands. The park is named for the Corps of Discovery explorers Meriwether Lewis and William Clark. The expedition camped nearby on April 17, 1805.

Little Missouri State Park

Little Missouri State Park has over 47 miles of trails for horseback riding and hiking. Horse corrals are available for individuals and groups bringing in their own horses, and several artesian wells are located within the park for horse watering purposes. Trails are marked at major interestions.

Sully Creek State Park

Horseback riders, mountain bikers, and hikers have access to the 120-mile long Maah Daah Hey Trail, which traverses the Little Missouri National Grassland and to the 50 plus mile long Maah Daah Hey II Trail. Those using the trail should carry adequate potable water for drinking. In the early spring or during high flows, canoeing the Little Missouri River also offers a unique perspective of the Badlands.

Tatman Branch Trail

The trail begins on the outskirts of Minot and travels north for 10 miles along the former Tatman Branch Line. The path parallels 27th Street NE for most of its length, offering a straight, flat route through the countryside that ends at Minot Gate, the main entrance to the military base.

Turtle River State Park

Turtle River State Park has a system of mountain biking, hiking, and interpretive trails.

Upper Souris Wildlife Refuge

Trails: Oxbow Nature Trail, Overlook Nature Trail, Cottonwood Nature Trail and Centennial Wildlife Nature Trail
Located 30 miles NW of Minot, the Upper Souris National Wildlife Refuge has five nature trails for walking and hiking, two canoe trails and one auto tour route.

Long Distance Biking Routes

With its low traffic and excellent country roads, North Dakota is great for cross-country bike trips. For particularly scenic treks, check out North Dakota's designated scenic byways and backways on the N.D. State Highway Map. Before riding, check at area Chamber of Commerce offices, state and federal parks, state and federal Forest Service offices and local bike shops for their recommendations on the best routes.

Some scenic areas to ride in North Dakota include:

- Little Missouri National Grassland
- Theodore Roosevelt National Park
- Lewis and Clark Trail (State highways 1804 and 1806)
- Pembina Gorge/Walhalla Area
- Turtle Mountains/Lake Metigoshe
- Fort Ransom State Park
- Sheyenne National Grassland



Jerome's

COLLISION CENTER

What We Do



Vehicle Collision Repair



RV Body Repair



Boat & Fiberglass Repair



Vehicle Detailing



Semi-Tractor Body Work



Nationwide Lifetime Warranty

Don't Settle for Less, **Choose Jerome's**

 (701) 852-5126 | (800) 761-1160 | **Fax:** (701) 839-4488

2705 North Broadway, Minot, ND 58703

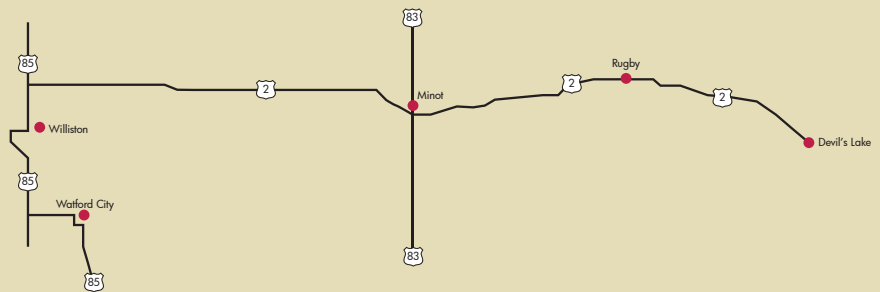
 Connect with us! jeromescollision.com



Your Summer Adventure Headquarters



Expert advice
on where they are biting,
and what they are using.



MINOT

Highway 83 South
At The 2 & 52 Bypass

WILLISTON

Million Dollar Way

WATFORD CITY

113 6th Ave SE Suite 5200

RUGBY

225 US Highway 2

DEVILS LAKE

1205 Hwy 2 East



DEVILS RUN
JUNE 2-4



ARTFEST
JUNE 10



WALLEYE TOURNAMENT
JUNE 23



FORT TOTTEN THEATER
MONTH OF JULY



RIBFEST
JULY 22

Devils Lake is the premiere fishing destination in North Dakota.
Plan your getaway weekend around one of these great events!

Visit our website for more great event details, fishing reports,
and information to book your vacation.

devilslakend.com

devils lake
North Dakota



NORTH DAKOTA FISHING

Let's Fish

PATRICIA STOCKDILL

Fishing off docks and piers for bluegill on Lake Metigoshe is popular in the summer.
N.D. Game and Fish Department Photo

It's almost like stepping into a kaleidoscope of colors and shapes – the wide array of fishing tackle and presentation options lining fishing sections in stores across North Dakota.

It doesn't matter if it's a local convenience store or a diverse business like Home of Economy, summer fishing and its tackle are popular. While many residents hone in on walleye for their great taste, several other species offer options.

The N.D. Game and Fish Department manages more than 400 lakes across the state and here are some tips for area fishing adventures this summer:

BASS, LARGEMOUTH:

When it comes to largemouth bass and their pension for warm water, in North Dakota that means Oliver County's Nelson Lake. "All of Nelson Lake has warm water in it compared to our other lakes," described Game and Fish Department North-central District Fisheries Supervisor Jason Lee.

Five miles east and three miles south of Center, the man-made lake has warm water year-around with abundant forage so warm water loving largemouth bass grow faster there than other lakes. Its natural reproduction is supplemented periodically with stocking, Lee added. Try traditional bass techniques for good numbers of largemouth in a variety of sizes.

Kota-Ray Dam southeast of Ray in Williams County might be a pleasant surprise for anglers in search of nice largemouth bass, as well.

BASS, SMALLMOUTH:

Feisty smallmouth bass are most often found in Lake Audubon, Lake Sakakawea, Hecker's Lake, any of the chain of lakes associated with the McClusky Canal, and the canal itself.

The McClusky Canal and its lakes - Hecker's, New Johns, East Park, and West Park lakes - feeds from the east side of Lake Audubon. Accessing the canal itself can be difficult, Lee advised, because of its steep, rocky edges. Best shore-fishing access points are off road bridges with a fishing pier on the canal northwest of Hecker's Lake, which is southeast of Mercer in Sheridan County.

Lake Audubon is on the east side of U.S. Highway 83 crossing the Lake Sakakawea embankment. The lake has multiple access points and fishing piers, making it excellent for shore-fishing.

Lake Darling northwest of Minot on the Upper Souris National Wildlife Refuge might offer up a smallmouth bass surprise for some anglers but remember that as a wildlife refuge, anglers should follow its special regulations such as no camping.

Smallies prefer gravelly substrate and rocky points with crayfish a popular food source. Lee suggests anglers target rocks and riprap from shore, casting small jigs or crankbaits away from shore or pitching small crankbaits towards shore when boat fishing. He also uses crankbaits as large as No. 9 or 11.

Lake Sakakawea also has smallmouth bass. Try areas with gravel and rocky points on the east end of the "Big Lake", such as areas around Sakakawea State Park.

BASS, WHITE:

Devils Lake is the state's "go to" white bass location. The 2015 age class is currently the most abundant population in the lake and fish could range between 14 and 16 inches. However, the upper end of Lake Sakakawea has its share of white bass at times and they love minnows in the spring.

BLUEGILL:

When it comes to this colorful panfish, head north, anglers, head north...to Lake Metigoshe, that is. Tucked in the Turtle Mountains of Bottineau County about 14 miles northeast of Bottineau, Metigoshe's mix of sub-emergent and emergent aquatic vegetation allows bluegill to escape predation. Its good water quality coupled with ample food means the lake has a nice mix of sizes and age classes.

While Lake Metigoshe is the region's premier bluegill lake, it's not the only one. They're also stocked in a few other lakes and while populations aren't strong, "they're slowly expanding," Lee explained. Try Long Lake (also in Bottineau County), Rice Lake northeast of Ryder (Ward County), South Carlson Lake southwest of Minot, Brush Lake three miles north of Mercer, Hiddenwood Lake south of Makoti, or even Nelson Lake.

Don't look for the numbers of fish from those lakes one might find in Lake Metigoshe but they could provide an occasional nice-sized bluegill, in part because lakes such as Rice, South Carlson, and Brush were stocked with adults a few years ago.



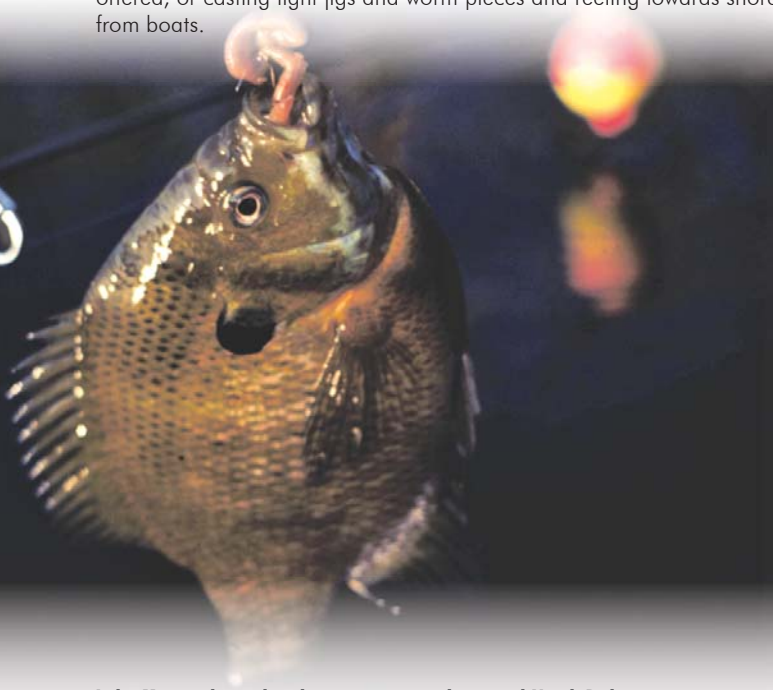
Oliver County's Nelson Lake – and its year-around warm water – provide what could be considered North Dakota's most consistent largemouth bass fishery.

N.D. Game and Fish Department Photo

NORTH DAKOTA FISHING

While not nearly as abundant as bluegill in Metigoshe, anglers going to Blacktail Dam northwest of highways U.S. 2 and U.S. 85 junction or Northgate Dam northwest of Bowbells in Burke County could also encounter some success. Smishek Lake northwest of Powers Lake has abundant small bluegill numbers – maybe even a keeper hiding somewhere.

Try a bobber with small hook and nightcrawler pieces from shore, casting along the edge of vegetation and letting the bobber float, Lee offered, or casting light jigs and worm pieces and reeling towards shore from boats.



Lake Metigoshe is the place to go in north-central North Dakota for bluegill. The lake's abundant aquatic vegetation, good water quality, and ample food provide some nice-sized bluegill and activity for anglers of all ages.
N.D. Game and Fish Department Photo

CATFISH:

When it comes to catfish in North Dakota, the Red River dividing North Dakota and Minnesota is considered the “go to” destination.

But it doesn't have to be.

Simply head to the Missouri River System, namely the Missouri River tailrace or Lake Sakakawea's back bays – especially those on the upper end around Williston or ones with feeder creeks and tributaries where water warms faster and is more turbid, described Game and Fish Department Missouri River Fisheries Supervisor Dave Fryda.

Native to the Missouri River, channel catfish provide good shore-fishing opportunities on both the river and lake. Given the state's short summers catfish have a short “growing” season. Most average about 2 to 5 pounds, sometimes 7 pounds. “A 10-pounder is pretty big, especially for Lake Sakakawea,” Fryda described.

The fishing pier at Lake Audubon's East Totten Recreation Area provides easy access to shore-fishing opportunities.

Patricia Stockdill Photo

Rainbow smelt are the forage of choice for virtually all of Lake Sakakawea's predator fish and channel catfish are no exception. Fryda suggests anglers try any type of bottom rig with dead smelt.

The best tailrace fishing typically begins in June extending into the fall. The cold water of the tailrace produces excellent eater-sized 2- to 3-pound catfish. Try shore-fishing along the boat ramp or take the road east of Garrison Dam National Fish Hatchery to the large pool of water below Garrison Dam spillway where larger catfish may lurk.

Use dead smelt or drift with three-way swivels if boat fishing in the tailrace.

CRAPPIE:

While some areas of the upper end of Lake Sakakawea offer crappie activity, two locations in the region could be considered “go to” spots – Trenton Lake on the south side of the community of Trenton near Williston and Nelson Lake. Williston's John Shunk suggests casting slip bobbers with small jig and minnow or casting traditional crappie rigs. Early season is the best time for Trenton Lake crappie.

Try shallow water of bays for Lake Sakakawea crappie but don't neglect Northgate Dam for crappie.

NORTHERN PIKE:

Summer fishing adventures often begin with northern pike in North Dakota, one of the most common and popular native fish species until walleye overtook the popularity reigns among anglers. “The good thing is they're easy to catch from shore,” Lee suggested.

In addition, pike flourish in high water years when shoreline vegetation becomes flooded. While North Dakota is in the midst of a dry spell, ample northern pike opportunities still exist across the region and there is still time to catch them before they head for deeper water in the summer heat.

Pike success is best right after the spawn, but anglers might still want to try places such as Buffalo Lodge Lake northeast of Granville, Rice Lake, Hiddenwood Lake, Makoti Lake (south of Makoti and close to nearby Hiddenwood Lake), the chain of natural lakes in McLean County - Long, Crooked, and Strawberry lakes - and Lake Audubon - again because of its abundant shore-fishing opportunities. And don't neglect Lake Darling for pike.

Northwestern pike lakes include Smishek Lake and Blacktail Dam.

Now is the time to cast red-and-white Dardevles or large crankbaits from shore, moving out to deeper water in July or August. “The nice thing about pike is they grow fast,” Lee added.

Just a note when pike fishing on Lake Audubon – the lake is stocked with muskie, which are similar in size and coloration to northern pike. Be certain of species identification when keeping pike because all muskie less than 48 inches in length must be released.



TROUT:

Trout aren't native to North Dakota lakes or rivers. They don't spawn naturally in the state, either, so any trout fishery is a result of the cooperative fish spawning, rearing, and stocking program between the Game and Fish Department and U.S. Fish and Wildlife Service Garrison Dam National Fish Hatchery below Lake Sakakawea.

The Game and Fish Department stocks several community ponds, including Minot's North Dakota State Fair Pond. Rainbow and brown trout are also in the Missouri River below Garrison Dam.

Spring Lake Park near Williston, Kettle Lake northeast of Zahl, and Stanley and Watford City community ponds are stocked annually.

WALLEYE:

Given their popularity, walleye are the most common fish species across North Dakota lakes and draw the most attention from fisheries managers.

The Missouri River System - Lake Sakakawea, Lake Oahe, and the river itself - plus Lake Audubon and Devils Lake are the state's premier walleye fisheries as well as regional destinations for many anglers.

However, other smaller nearby lakes can provide walleye opportunities and may not garner as much attention. Lee suggests places like Buffalo Lodge Lake, Lake Metigoshe, Lake Audubon, Hiddenwood Lake, Antelope Lake northeast of Anamoose in Pierce County, or Clear Lake southeast of Anamoose. A word of caution, though, Lee offered - Clear Lake doesn't have a boat ramp and shore access is limited.

The south side of Lake Audubon is closed to open water fishing because it's part of the Fish and Wildlife Service's Audubon National Wildlife Refuge. Buoys mark the boundary across the water. Even so, Audubon has ample shore-fishing opportunities with a Game and Fish Department Wildlife Management Area embracing the north side of the lake to provide multiple boat access points.

Look for the possibility of keeper-sized walleye from White Earth Dam with an occasional larger walleye from Northgate and Blacktail dams.

Early season is the time to try jigs and minnows for walleye, moving into jigs and nightcrawlers as summer advances. Spinners or slow death hooks with nightcrawlers are typically good summer presentations.

The N.D. Game and Fish Department website, (gf.nd.gov) has just about everything an angler needs to know to help them head to the water for a summer fishing adventure. Simply click "Fishing" on the home page, and then "Where to Fish" for details.

The N.D. Game and Fish Department stocks catchable sized rainbow and brown trout in several community ponds in the state, providing shore-fishing in small and larger towns alike. For example, the North Dakota State Fair Pond has trout, as do ponds in communities such as Stanley and Watford City. In addition, the Missouri River tailrace below Garrison Dam is another good location to test one's fly-casting ability.

N.D. Game and Fish Department Photo



Although walleye are the most-desired fish species among anglers heading to North Dakota lakes and rivers, many lakes across the state offer a variety of other species.

Patricia Stockdill Photo

NORTH DAKOTA FISHING

Adams Lake

Lots of small perch, with some up to 10 inches, and a few Walleye.

Arnegard Dam

Primarily pike, with some larger fish. Some adult perch and an abundance of black bullhead. Stocked with adult catfish in 2016.

Bisbee Dam - Big Coulee

Pike, walleye, perch, bluegill and crappie. Most walleye longer than 16 inches. Good pike numbers with some up to 6 pounds. Most perch are small.

Boundary Lake

Decent number of 6-8 inch perch.

Coal Mine Lake

Good number of northern pike, with some larger fish.

Crooked Lake

Good number of nice sized pike and walleye, with some smaller perch.

East Park Lake

Decent walleye numbers, with some larger fish. Fair number of small to medium sized yellow perch. Bluegill population has increased in recent years.

Epping-Springbrook Dam

Fair populations of northern pike, walleye and perch. Black bullhead abundant.

Fox Lake

Good walleye and perch populations, with larger fish present.

Froelich Dam

Walleye and pike abundant. Yellow perch, crappie, bluegill and largemouth bass present.

Gravel Lake

Pike and perch fishery. Pike average about 24 inches and most perch under 10 inches.

Green Lake

Quality walleye and perch fishery, with a low number of pike.

Harmony Lake

Good number of bluegill, with some quality sized fish. Stocked annually with rainbow trout.

Hatchery Kids Pond

Good shore fishing for early season trout.

Jasper Lake

Walleye up to 25 inches abundant and a fair number of large perch present.

Juanita Lake

Some pike available, but not high numbers. Bullhead abundant.

Kettle Lake

Primarily a rainbow trout fishery, but also contains some brown trout and largemouth bass. Small perch abundant.

Kraft Slough

Walleye and perch abundant.

Lightning Lake

A quality trout fishery, with some large fish. Stocked annually with rainbow trout.

Little Heart Pond

Catchable sized rainbow trout stocked in spring.

McPhail Lake

Small perch abundant and low numbers of walleye present.

Mirror Lake

Stocked fry walleye in May.

Nelson Lake

The best largemouth bass lake in the state. Abundant quality sized bluegill and crappie.

Northgate Dam

Good populations of walleye, rainbow trout and bluegill. Fair number of black crappie and a few largemouth bass.

Odland Lake

Abundant perch up to 1 pound & bluegill up to 1 pound. Abundant young walleye, with some up to a quarter-pound.

Painted Woods Creek

Fair number of northern pike.

Paris Lake

Fair number of perch various sizes.

Rafferty Lake

Walleye up to 18 inches abundant.

Round Lake

Good number of pike and some walleye.



Smallmouth bass can be an underappreciated fish among many North Dakota anglers because of their passion for walleye but they're missing out on a lot of action and good eating. Try some of the McClusky Canal lakes, Lake Audubon, or rocky points on the bays of the east end of Lake Sakakawea.

N.D. Game and Fish Department Photo



WOODLAND
RESORT

WOODLAND RESORT

Devils Lake's only full service lakeside resort and fishing destination facility



701-662-5996
WOODLANDRESORT.COM





Where the Sky's *the Limit!*

✓ GAMING ✓ DINING ✓ LODGING ✓ ENTERTAINMENT
SKYDANCERCASINO.COM | BELCOURT, NORTH DAKOTA

**New Player
*Sign-ups!***

\$10 Free Play and one FREE Drink





STATE PARKS, CAMPING & LAKES

Camping in North Dakota

4 Bears RV Park

Located just south of the casino overlooking beautiful Lake Sakakawea, 4 Bears RV Park offers 24-hour security with 115 full service hookups and numerous picnic shelters. Primitive camping is also available.

Beaver Lake State Park

Located on the west shore of Beaver Lake, the park's gently rolling prairie provides scenic views for leisurely walks. In the summer, the lake attracts visitors for boating, canoeing, water skiing and fishing. Camping, picnicking and water-based activities available from mid-May through the end of September.

Cross Ranch State Park

Located along 7 miles of the last free-flowing, undeveloped stretches of the Missouri River, North Dakota's Cross Ranch Centennial State Park is rich in cultural and natural history.

Downstream Campground

Downstream Campground is located on the east bank of the Missouri River below Garrison Dam, which forms Lake Sakakawea. The area offers a wide variety of recreational activities, including boating, fishing and hunting.

Fort Abraham Lincoln State Park

Rich in both military and early Native American history, Fort Abraham Lincoln was once an important infantry and cavalry post. It was from this fort that Lt. Col. George Armstrong Custer and the Seventh cavalry rode out on their ill-fated expedition against the Sioux at the Little Big Horn. Portions of the military post, including the Custer House, have been reconstructed. Popular with visitors is On-A-Slant Indian Village. Reconstructed earthlodges depict the lifestyle of the Mandan Indians, who occupied this site from about 1575-1781. A modern campground is located in a scenic wooded area adjacent to the Heart River with picnic sites and playground equipment. Walking along the gently sloping hills, visitors have a panoramic vista of the Missouri River from the park's nature and historic trails. The park also has 4 primitive campsites with horse corrals.

Fort Lincoln State Park

Rich in both military and early Native American history, Fort Abraham Lincoln was once an important infantry and cavalry post. Portions of the military post, including the Custer House, have been reconstructed.

Fort Ransom State Park

The park, nestled in the picturesque and heavily-wooded Sheyenne River Valley, is managed as a natural and scenic area, and is located on one of North Dakota's officially designated Scenic Byways and Backways.

Fort Stevenson State Park

On the north shore of giant Lake Sakakawea, 3 miles south of Garrison, Ft. Stevenson State Park is known as the walleye capital of North Dakota. Visitors will find a modern campground, sleeping cabins, visitor center, interpretive trails and prairie dog town, as well as boat launching facilities.

Grahams Island State Park

The lake features some of the best fishing in North Dakota, both summer and winter. Amenities at Grahams Island State Park include a boat ramp, bait shop, modern and primitive camping facilities and camping cabins.

Icelandic State Park

Located on the north shore of Lake Renwick, Icelandic State Park offers visitors a wide array of recreational opportunities and glimpses of North Dakota's homesteading heritage.

Indian Hills Resort

Offers a variety of Camping and Lodging services from rustic Log Camping Cabins, Tent Camping and RV sites, to fully modern Lodging. Experience Lake Sakakawea's famous Walleye, Northern Pike, Small Mouth Bass, and Salmon fishing.

Lake Metigoshe State Park

Nestled in the scenic Turtle Mountains on the shores of Lake Metigoshe, Lake Metigoshe State Park was constructed by the Works Progress Administration in the 1930s and is one of the most popular year-round vacation spots in North Dakota.

Lake Sakakawea State Park

Located on the south shore of Lake Sakakawea, adjacent to Garrison Dam, Lake Sakakawea State Park offers a wide range of water based recreational activities and facilities. The park has a full service marina, including convenience store, fishing guide services and boat and camper storage.



Fort Stevenson State Park

STATE PARKS, CAMPING & LAKES



Sunsets in North Dakota
ND Tourism Photo

Lewis and Clark State Park

Lewis and Clark State Park is situated on one of the upper bays of Lake Sakakawea. The rugged buttes of the North Dakota Badlands display a towering backdrop to one of the state's best recreation areas.

Little Missouri State Park

Some of the most picturesque Badlands scenery can be found at Little Missouri State Park. Most of this primitive park is accessible only on foot or horseback. Electrical hookups are available to campers, however, all other facilities are primitive.

Lunds Landing

Beautiful, quaint country setting, genuine hospitality, delicious homemade food, Juneberry pie, pan-fried walleye. Full-service restaurant, cabins, kayaks, canoes, boat rentals, fishing, hunting, birding activities, golfing, camping, tipi camping and Lewis and Clark Interpretive Trail. Wireless Internet available in all the cabins and lodge.

Sully Creek State Park

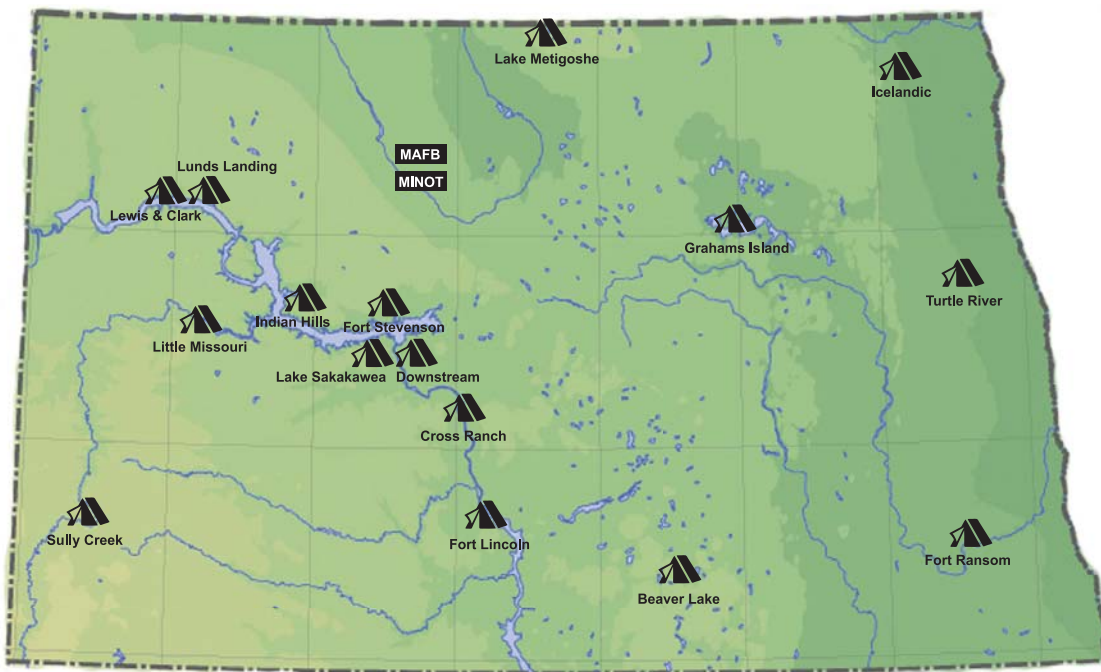
Located in the heart of the North Dakota badlands, Sully Creek is just minutes away from the historic town of Medora and Theodore Roosevelt National Park. Corrals are available for those bringing in their own horses.

Turtle River State Park

Situated on the meandering Turtle River, Turtle River State Park is located in a beautiful wooded valley. Constructed in the 1930s by the Civilian Conservation Corps, the park offers year-round recreational activities, including camping, picnicking, fishing and trails for hiking, mountain biking and cross country skiing.

Theodore Roosevelt National Park

Whether you're an avid camper, a hiking expert or just love beautiful scenery, there is something for everyone to enjoy at Theodore Roosevelt National Park. The park spans a total of 70,447 acres and is open year-round, although some trails and facilities are only open seasonally. The North Unit Visitor Center is open daily April to mid-October and Friday, Saturday and Sunday through the rest of the year. Be sure to drive the 14-mile Scenic Drive that leads in from the entrance of the park to Oxbow Overlook. The South Unit Visitor Center is located at the park entrance in Medora, North Dakota. It has an info desk, museum, movie and offers plenty of opportunities to learn about Theodore Roosevelt and his experience in the badlands. A major feature of the South Unit is the paved, 26-mile Scenic Loop Drive with interpretive stops that illustrate the parks history and natural features. Over 100 miles of trail make it a first-class hiking park, although because prairie and grasslands mostly surround the park, water and shade are limited along trails. Some are short self-guided trails while other trails span the length of the park.



CAPITAL R.V. CENTERS, INC.



a  Campers Inn RV company



Why you should buy from **CAPITAL RV**

- ▶ Named Top 5 Blue Ribbon Dealer in the U.S. by RV Business Top 50 Awards
- ▶ Nation's Largest Family-Operated RV Dealership
- ▶ Factory Trained and Certified Service Technicians
- ▶ Professional Sales Staff with a No-Pressure Sales Process
- ▶ Motorhomes, Travel Trailers and More from the Industry's Leading Manufacturers
- ▶ Award-Winning We Care Hotline for any Questions or Concerns

We have you covered for
RV SALES
SERVICE • PARTS
No. 1 RV Dealer
in the Dakotas!

*Contact
or Visit Us*

3000 14th Avenue SW
Minot, ND 58701

Call today
1-800-488-7896

WWW.CAPITALRV.COM



2024 SCHEDULE



**APRIL 26
& 27**

MANDAN MELTDOWN
7 PM

MAY 3

MANDAN DIRT SERIES
7 PM

MAY 10

MANDAN DIRT SERIES
7 PM

MAY 17

MANDAN DIRT SERIES
7 PM

MAY 24

MILITARY APPRECIATION
7 PM

MAY 31

IRONMAN 100
7 PM

JUNE 7

LegenDary TOUR
7 PM

JUNE 14

MANDAN DIRT SERIES
7 PM

JUNE 21

HALL OF FAME NIGHT
7 PM

JUNE 28

NIGHT OF THE LEGENDS
7 PM

JULY 11

DAKOTA CLASSIC MOD TOUR
7 PM

JULY 19

MANDAN DIRT SERIES
7 PM

**JULY 26
& 27**

ND GOVERNOR'S CUP
7 PM

AUGUST 2

MANDAN DIRT SERIES
7 PM

AUGUST 16

DRIVE TO SURVIVE
7 PM

AUGUST 23

CHAMPIONSHIP NIGHT
7 PM

**SEPT. 27
& 28**

OKTOBERFEST
7 PM (9.28 6 PM)

SPECIAL EVENTS

JUNE 8

TRUCK/TRACTOR PULL
5 PM

AUGUST 10

MONSTER TRUCKS
1 PM & 7 PM

AUGUST 24

JVOR MUD DRAGS
12 PM

OCT. 5

DEMOLITION DERBY
1 PM



DACOTAHSPEEDWAY.COM
FOLLOW US @DACOTAHSPEEDWAY

Great Stories Start Here!



PREMIER GAMING, DINING & RESORT DESTINATION

GAMING | LODGING | DINING | LIVE ENTERTAINMENT
SPORTSBOOK BETTING | CAMPGROUND | MARINA
CABINS | GROCERY STORE

  SPIRITLAKECASINO.COM

SOUTH DAKOTA

The Other Dakota: Worth the Drive

A road trip must for everyone at Minot

ERIN BEENE

Badlands National Park awes with varied landscapes and lots of hiking possibilities

Erin Beene Photos

I'm a traveler now. I wasn't always. After we were stationed at RAF Mildenhall, England, about 10 years ago, I uncovered a European attitude that I wasn't aware existed. The Europeans (much before Covid) all seemed to adopt a traveling spirit that I hadn't found in the 25 years I lived in the US. Traveling to new countries and places, taking a "holiday," was something the Brits and Europeans seemed to do all the time. Yet I knew many people growing up that had never even left the state of Texas, some never even traveling beyond a 200-mile radius. But as anyone who has lived overseas will tell you, travel is much more commonplace. So, after a first year of a colicky baby, my small family and I gave in and joined the travel epidemic around us. I was awed by the new worlds that greeted me. Thus, like so many before me, I fell in love with travel.

Since that time I have made it my mission to use our home base (wherever that may be) and find the coolest places we can visit in the surrounding areas. Knowing we will only be in each place a short time, it gets my travel engines pumping. After surviving my first Minot winter this past year, I needed to get out of town, and fast. But where could we go? What was affordable, driveable and kid-friendly? Looking slightly south in an attempt to warm a tiny bit, my family and I settled on none other than South Dakota!

The state of South Dakota is massive and, unlike its upstairs neighbor North Dakota, there were a lot of places that popped up when I Googled "Places to Visit in South Dakota." We only had six days, and we knew we wanted to visit our good friends stationed at Ellsworth AFB near Rapid City, so I started our trip in that area. Day one started a little after sunrise and ended at our first destination of Deadwood in the Black Hills. The drive was only about seven hours from Minot, but I do need to add that when driving anywhere for long distances in the Dakotas, get gas wherever you can! I know it is crazy expensive nowadays and probably even more so in these backroads towns, but trust me. We learned the hard way that gas stations are not readily available in the North Dakota state highways and backroads. If you see a gas station on a long journey, top off,

just to be safe. Back to Deadwood. Deadwood is known for its late 1800s gold rush and the legendary lawmen and outlaws that roamed the area. The town itself is tiny, but there are lots of hotel options in town to choose from. We stayed near the main street as we wanted to be within walking distance to the attractions. We visited the "Days of '76 Museum" which had a lot of kid friendly activities and information about the original settlers in Deadwood. It's worth a visit if you like museums. Since we visited in May, we were a little bummed to find out that many of the Deadwood classic activities were not yet open as the tourist season had not yet begun. If you like to do things in the off-season to avoid crowds, like us, you may be disappointed with Deadwood. I would suggest going during the crazy summer months with the rest of the tourists to get the full shows, and experiences.

After exploring everything we could in Deadwood we took off for Spearfish. We happened upon Spearfish City Park and my kids (ages 9 & 6) had a blast! If you've got kids, this playground will wow the entire family and is worth a stop. Outside the playground area was a little creek bed where we spent some time skipping rocks. While it was too chilly for wading, I imagine it is a popular splashing spot in the summer. We had to pull



Spearfish City Park is a Must-Stop for Kids



We loved the historical sights in downtown Deadwood.

our kids away from the playground to explore the newly-named D.C. Booth Historic National Fish Hatchery. We were skeptical about this place, but it actually ended up being really informative and interesting! Make sure you bring some quarters to get fish food and check out the re-made train car that used to transport fish all over the US. The fish hatchery is a really educational and free place to stop!

Our first evening in Rapid City we ventured out to the Dinosaur Park. It's a little bit of a steep climb to see the dinosaurs and toddlers may need some strict attention, but once at the top, the panoramic views of the city were amazing! This was



The Presidents Walk in downtown Rapid City, a free and educational adventure.

a cool place to see but won't take up much of your time, so it's an easy 15-20 minute time filler.

Since we are a homeschool family, most trips end up being a bit educational. We have been studying the US Presidents and South Dakota has so much President information that we decided to make it the theme for our trip. Early on a cloudless, sunny morning, we headed to downtown Rapid City, intent on locating every single statue of American Presidents which are scattered within a few blocks downtown. A walking tour map can be located online at visitrapidcity.com. We printed this and started our adventure.

So much Aberdeen, so little time.



aberdeen
South Dakota

VisitAberdeenSD.com | [f](#) [i](#) [p](#) [v](#)

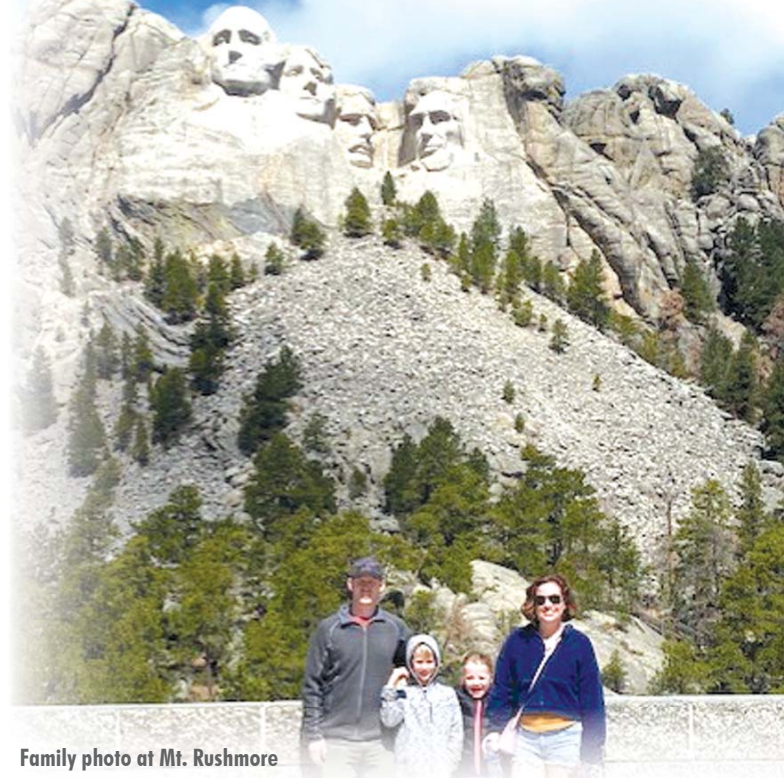
SOUTH DAKOTA



Retired, glass covered missile silo on the road will be a highlight for any military enthusiast.

Yep, we found every single President (except Trump and Biden who haven't been made yet) and it took us a little less than two hours. This was honestly one of the most fun parts of our trip! My kids love a good checklist, so the hunt for all the presidents was a cool historic activity for us. Even if you don't think your family is up for the entire hunt, stopping and seeing at least a few is worth it for all ages. I'm not much of a foodie, so the places we ate were generally quick. But while in downtown Rapid City we did stop at Firehouse Brewing Company for some amazing food (they also have their own brewery and winery), and you definitely need to stop at Mary's Mountain Cookies for some absolutely delicious and unique flavor cookies! After our day downtown I dropped off my husband and kids at our friends' house who live at Ellsworth AFB, and my friend and I spent Mother's Day afternoon at the Prairie Ridge Golf Course outside Ellsworth AFB. This 9-hole course offers club rentals, great prices for military personnel and beautiful scenery. I'm a pretty poor golfer. For me it's all about the fun and company, but this course works well both for serious golfers and beginners. We had a blast!

Our 4th day in South Dakota was our busiest. We headed out to the Presidential National Wax Museum in Keystone. Since our trip revolved around the Presidents this was a must see! The whole family enjoyed seeing the realistic scenes as well as recording a mock- state of the union address video. We had a full day planned, but just looking around, there were so many cool things to do in Keystone including the Big Thunder Gold Mine and Rushmore Tramway Adventures and lots more. If we went again, I would plan for an entire day in Keystone for sure! After the museum we visited the much-anticipated Mt. Rushmore! While both my husband and I had been there before, our kids hadn't, and for some reason my six year old was amazed! As any parent will tell you, sometimes kids get excited about weird things and aren't into things you'd think they love. Well my daughter loved Mt. Rushmore and that in itself made it a highlight of our trip. The top gets a bit windy and maybe chilly so make sure and bring a jacket if the weather is iffy. Also be sure not to skip the walking trails. After Mt. Rushmore, we drove down to Crazy Horse Memorial and learned a lot about how and why it was and still is being built. After that we planned to drive through Custer State Park, but we decided at the last



Family photo at Mt. Rushmore

minute to take a detour to Evan's Plunge Mineral Springs in Hot Springs instead. It was out of the way, but we wanted to give it a whirl. The indoor pool features water slides and naturally warm mineral water from a thermal spring. The place itself was a bit dated, but the kids loved it. The water was chilly, but the unusual atmosphere made it a different type of activity for us and a much needed break in sight-seeing.

On our 5th and last day we headed out to Badlands National Park. Having younger kids, we're not all-day hikers, but the landscape there offered so many different types of visuals and mini hikes... it was a sight to see! We spent several hours there. On the way back to Rapid City we stopped off on the side of the road to see an old, retired missile silo. My husband and probably many other military members found this refurbished and glass ceiling silo to be a cool part of the trip. The silo even has a tour guide out there waiting to answer questions. It is worth stopping for those military enthusiasts and only takes a few minutes. The billboard advertising around the route also led us to stop at Wall Drug on the way back. I think we had the wrong impression of what it was going to be, but we were a bit miffed when what we found was a maze of trinket shops instead of a large and welcoming convenience store. But we got some ice cream and enjoyed the sun anyway.

At the end of the epic South Dakota vacation we were tired and happy. There was so much more to see that we didn't get a chance to, and western SD has so many options for visitors. Even with our full four days we couldn't see near enough. I think this area requires two full-sized trips, but it's definitely a place for families, hiking enthusiasts, motorcycle people (we drove through Sturgis) and really everyone. All I know is that a trip to the western part of South Dakota needs to be on everyone's list. The history, varying landscapes and tourist destinations make it a must see road trip for any Minot AFB resident.



NORTH DAKOTA DAY TRIPS

Theodore Roosevelt
National Park Wind Canyon

The best place to be in the summer is lakeside. The calm waters provide an abundance of things to do and enjoy. Swimming, fishing, boating, or just hanging out on the shore are all the perfect activities for a sunny day and are hard to surpass in how fun and easy they are to do.

East Arroda Lake

This beautiful spot is in Oliver County and provides an excellent spot for fishing and boating. The area is simply gorgeous all summer long.

Des Lacs Lake

Des Lacs Lake is home to a wildlife refuge as well as recreational areas. These help provide the perfect lake environment for everyone to enjoy. Hundreds of thousands of snow geese stop on their migration to this lake every year and plenty of other wildlife can be seen. Head out to Kenmare, North Dakota and take a visit to Des Lacs Lake and experience it for yourself.

Des Moines Lake

This lovely lake is the perfect spot for some lakeside lounging as well as some fun on the water. There are a couple of lakes nearby as well, so your possibilities are endless in this area. Des Moines Lake is located in Kidder County about 30 miles from Carrington.

Devils Lake

Devils Lake is the largest natural lake in North Dakota and is the best spot for summer fishing. If fishing is not your thing, then you can still enjoy the lake in any way you choose. There are tons of opportunities for all sorts of activities and it's definitely worth visiting again and again.

Lake Audubon

This lake is great for smallmouth bass fishing as well as perch and walleye. It's not only a perfect spot for fishing but also a beautiful spot in general. Grab some rods and check it out sometime!

Lake Darling

Lake Darling is the focal point of the Upper Souris National Wildlife Refuge located in northwest North Dakota.

Lake Metigoshe

Nestled in the Turtle Mountains, Lake Metigoshe is an absolutely breathtaking spot that is perfect for a stroll or setting out on the beautiful blue waters in a canoe and just enjoying nature and the warm weather. You won't find many places more serene than here, and the environment is picture worthy year round.

Lake Oahe

Lake Oahe extends from South Dakota all the way into south central North Dakota. It has prime opportunities for catching walleye, northern pike, catfish, and white bass. There's plenty of lake to enjoy and plenty of fish to catch here, and it's definitely a spot you should visit.

Lake Sakakawea

North Dakota's largest body of water is one of the top destinations for everything you can enjoy when it comes to seasonal lake fun. Whether you have a sailboat, pontoon, canoe, speedboat, or prefer to experience the shore or take a plunge into the water for a swim, you are guaranteed to have a good time here.

Larimore Dam

Take a weekend trip and camp at this spectacular lake formed from the Larimore Dam. Bring a canoe or kayak and take an early morning adventure across the lake, or just have a picnic lakeside on a pleasant day. There are so many possibilities here to make some awesome summer memories!

Nelson Lake

Nelson Lake is a great place if you are looking for bass fishing. There are both largemouth and smallmouth bass here along with northern pike and crappies. You're sure to get some bites here!

Powers Lake

The town of Powers Lake, North Dakota, is right on the banks of Powers Lake. The lake is an optimal spot for all kinds of summer fun, so get out there and enjoy what it has to offer.

Rice Lake

Rice Lake, near Minot, is a great summer destination for anyone who loves being around water. Swimming, fishing, boating - you name it, this lake is there for. Hang out with family and friends there all day and enjoy a sunset over Rice Lake to complete a perfect summer evening.

Strawberry Lake

Strawberry Lake is located in McLean County, North Dakota. This lake is 144 acres in size. It is approximately 21 feet deep at its deepest point. Anglers can expect to catch a variety of fish including Bluegill, Northern Pike, Walleye and Yellow Perch.

GARRISON

Located on the North Shore of Beautiful Lake Sakakawea
45 minutes South of Minot

Get Hooked on planning your next adventure!



GARRISONND.COM



800-799-4242



GARRISON_ND



VISIT GARRISON, ND

Saturday, August 17th Garrison ND

JOIN US FOR A DAY FULL OF FUN!
2ND ANNUAL SAKAKAWEA
CLASSIC CAR SHOW 1-5PM

Aw Shucks! Corn Fest

Corn Shucking Contest Free Corn on the cob Watermelon eating contest

Food and Shopping Vendors AND SO MUCH MORE!

Party in the Park



The Dramantics
\$10 admission starting at 6 p.m.
Kids 12 and under free
Food & Beer Gardens will be available
Bring your lawn chairs



Where Christmas Begins
The event turns The community into a quaint Victorian town from the era of Charles Dickens'.

NOV. 29-30 • DEC. 6-7 • DEC. 13-14

- Carriage Ride
- Double Decker Bus Rides
- Street Food Vendors
- Live Entertainment
- Craft Show
- Lighted Parade
- Live Play Performance
- & Many more experiences & attractions!



www.dickensfestival.com

CATCH THESE OTHER UPCOMING EVENTS:

Smore's Record Attempt

May 18 at 2pm - 4pm
Fort Stevenson State Park
Kick off summer, celebrate the 50th anniversary of the park and help break the record of the most people to simultaneously make s'mores

Sky Fest over Ft. Stevenson

May 25-26-27 10am-4pm
Fort Stevenson State Park
Kite flying festival for all ages!
www.skyfestnd.com
May 29 Military Service Personnel Day with free entrance into park

EMS Kid Event

May 25 at 4:00-7:00pm
Fort Stevenson State Park
Meet EMS personnel, learn safety information, games & activities, food, prizes, and more.

National Trails Day

June 1 at 2:00pm
Fort Stevenson State Park
Ranger guided hike through the park's native prairie.

National Marina Day

June 28 at 10:00pm
Garrison Bay Marina
Ft. Stevenson State Park
Enjoy kiddie boats, rain gutter regatta, and minnow races.

Frontier Military Days

June 22-23 at Noon-4:00pm
Fort Stevenson State Park
Living history demonstrations, skills & crafts, & military encampment.
Saturday: Entertainment TBD, Free Rootbeer Floats.
Sunday: Presentation TBD, Free Pie & Ice Cream.
June 23- Visitor Appreciation with Free Entrance to Park

ND JUNIOR GOVERNOR'S CUP

July 20 at 10:00am-1:00pm
Fort Stevenson State Park
Ages 17 & Under. Prizes awarded.
Lunch provided for participants.

Harvest Market on Main

August 6 - August 27
Tuesday Evenings
Main Street
Make it, Bake it, or Grow it. Enjoy local vendors selling fresh produce, goodies, & handmade products.

Skinautique & Boat Parade

August 3 at 5:00-10:00pm
Fort Stevenson State Park

Aw Shucks! Corn Fest

August 17 at TBD
Garrison City Park
Food + Free Corn Feed, Car Show, Vendors, Games & Contests, & more.

PARTY IN THE PARK

August 17 5-11 PM
entertainment by 2 bands
after AwShucks Corn Fest

OKTOBER FAMILY FEST

Sept 21 at 4-8 pm
Fort Stevenson State Park
Family friendly fun Oktoberfest.
Details TBA

Dickens Village Festival

November 29-30
December 6-7, 13-14
www.dickensfestival.com
Victorian family festival in a quaint English setting. "Christmas Capital of ND" with Queen Elizabeth rides, lighted parade, entertainment, craft vendor show, & more.

Angel of Hope Memorial

December 6 at 7:30pm
Wilderness Park
Memorial service remembering the children we have lost.

Milk & Cookies w/ Santa

December 14 at 1:00-3:00pm
SACA Lodge
Meet Santa & Mrs. Claus! Decorate a Christmas Cookie & enjoy a glass of milk.

WHERE
GREAT PEOPLE
AND NEW
ADVENTURES
MEET



Here's your invitation to an extraordinary place where fun events for the whole family are happening all summer long. Just two hours west of Minot, enjoy fairs, arts festivals, celebrations of history and culture and much more. Plan your Williston getaway!

visit **Williston**
—ND—

VisitWilliston.com 800-615-9041

EXPLORE RUGBY



Prairie Village Museum

The community of Rugby is perhaps known best for being the Geographical center of North America as well as the location for the annual Pierce County Fair. Rugby is located 64 miles east of Minot. Rugby has several places of interest for tourists such as a Museum, Library, Golf course, Movie Theater, swimming pool, parks, playgrounds, hockey arena, baseball diamonds, frisbee golf, tennis court, pickleball court and excellent hunting grounds for waterfowl, upland game, and big game. Each summer, the small town hosts the Pierce County Fair June 27-30, 2024 which invites locals and communities nearby to attend attractions such as the demolition derby, and carnival rides.

From recreational facilities and shopping, to museums and historical landmarks, Rugby has something for everyone. Whether you're here for the day, a weekend getaway or an extended stay, we have the services and attractions to make your visit both pleasurable and memorable. The Geographical Center of North America was established at (or near) Rugby by a U.S. Geological Survey in 1931. A year later, W. B and E.B. Paterson - assisted by the local Lions Club, Boy Scouts and other volunteers - erected a fieldstone monument at the intersection of U.S. Highway 2 and N.D. Highway 3 to denote Rugby's geographical distinction. Thousands of visitors stop at the monument each year to snap photos at North America's geographical center.

Take a sip back in time at

Rockin' Relics

Featuring **soda & fountain diner**

hand dipped malts and shakes, frappes, smoothies, ice cream and old fashioned soda fountain favorites!

Enjoy a seat on our outdoor patio!!

Satisfy your appetite with our Paninis, Burgers, Salads, Wraps and more!

Rugby, ND Mon - Fri 10am - 5pm, Sat 11am - 3pm

RUGBY

your CENTER FOR Fun North Dakota

Shop till you drop

Take a step back in time at Prairie Village and Museum

GEOGRAPHICAL CENTER OF NORTH AMERICA RUGBY, ND

Contact our Convention & Visitors bureau to get the latest happenings and incentives while you visit!

#rugbyndgeographicalcenter

Rugby Chamber of Commerce CONVENTION & VISITORS BUREAU

www.RUGBYnorthdakota.com



Prairie Village Museum

Prairie Village Museum is open!
Call 701-776-6414 for more information.

Rugby Lions Music in the Park

Ellery Park
7pm beginning June 5 and every Wednesday through August 21.

Rhubarb Festival & Car Show

Prairie Village & Museum
Sunda, June 9, 2024

Smackdab Motorcycle Run

Saturday, June 22, 2024

4th of July Parade

Thursday, July 4, 2024

26th Annual Chamber Softball Tournament

Saturday & Sunday, July 13 & 14, 2024

Crazy Days

Thursday, July 18, 2024

Balta Street Dance

Saturday, August 3, 2024

13th Annual Daryl Kuhnenn Memorial Ride

Saturday, September 7, 2024
Follow them on Facebook at Daryl Kuhnenn Memorial Ride for updated information or call 701-208-0066

Wine Walk

Thursday, September 19, 2024

Octoberfest

Saturday, September 21, 2024

Prairie Pumpkin Patch

First weekend – September 21-22, 2024 through October
Call 776-5846 for more info



MAKE IT THE BEST SUMMER YET!

Low Rate Vacation Loans

Make your dream vacation come true with a vacation loan from NSCCU.

For a limited time, you can borrow up to \$6,000 with a Vacation Personal Loan to help you find your fun and adventure all summer long.

Call or stop in to discuss your options with your local Financial Services Officer or to get pre-qualified. Some restrictions apply.

Maddock | Rugby | Bottineau | Cavalier | Grafton | Tolna | Minot | Minot AFB | Velsa | Willow City | Butte | Devils Lake



nscu.com



WATFORD CITY



Watford City
Watford City Photo

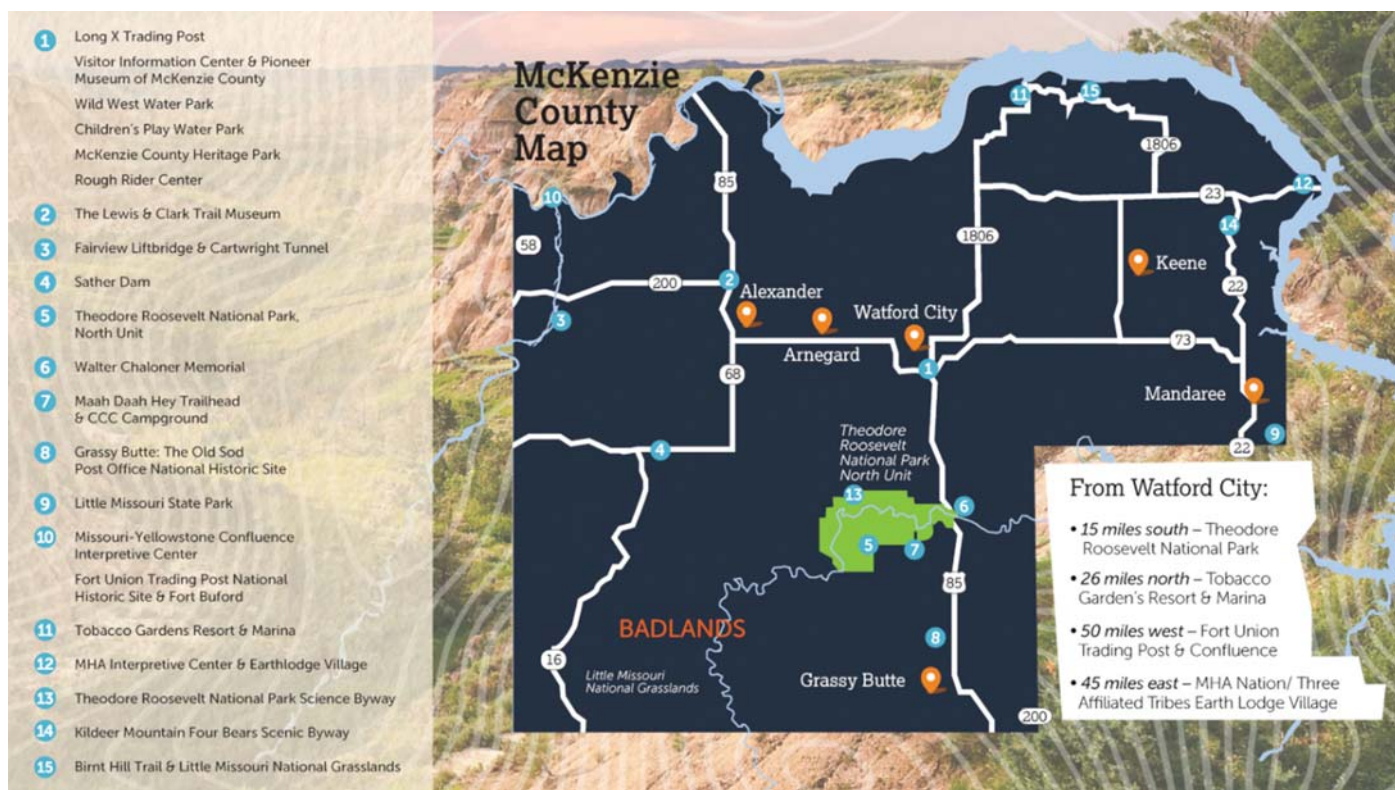
Searching for an all-around destination for your summer adventure? Look no further than Watford City, North Dakota! Watford City is located in McKenzie County, about 2.5 hours west of Minot Air Force Base. Whether you're looking for a cultural experience, fun for the whole family, or an outdoor adventure, Watford City has it all.

The historic city is nestled in western North Dakota near some of the state's most popular attractions, including Theodore Roosevelt National Park and the Little Missouri National Grasslands. Tobacco Gardens Resort and Marina offers local camping, kayak rental, fishing and boat access. Walk or bike the Maah Daah Hey Trail for a taste of North Dakota's majestic terrain.

Take a day off to explore downtown Watford City and you'll find a variety of local shops with hand crafted gifts and North Dakota treasures. The Wild West Water Park has water slides, a splash pad, and a variety of swim activities for some family fun on those extra hot days. Grab a bite to eat and settle down with a drink at one of their unique restaurants, coffee shops, or even the local brewery.

For the history buffs, Watford City has many attractions nearby for visitors to learn about North Dakota's rich past. The McKenzie County Heritage Park sits on six acres of land and includes historic buildings from all over the state and is now open year-round. Nearby, the Fort Union Trading Post National Historic Site and Fort Buford State Historic Site offer a glimpse into the history of life on the frontier with original structures and informative (and sometimes interactive) exhibits. Take a tour of a Native American earth lodge and learn more about North Dakota's Mandan, Hidatsa, and Arikara people at Knife River Indian Villages National Historic Site. At the nearby Fort Berthold Indian Reservation, you can hear stories from cultural interpreters and even spend the night in an earth lodge to experience the heritage of North Dakota's indigenous peoples.

To learn more about all Watford City and McKenzie County have to offer and even take a virtual tour, visit www.visitwatfordcity.com. Plan your trip Watford City today to experience small town charm with big-city attractions!



18 Holes of Rolling Prairie Golf in the **HEART** of Western North Dakota



FOX HILLS

GOLF COURSE
WATFORD CITY, ND

Pro-Shop | Driving Range | Foxhole Restaurant & Bar | GPS Carts

Book Your Tee-Time Online: [FOXHILLSGC.COM](https://www.foxhillsgc.com)

Located Just Minutes from US Highway 85: 3104 4th Ave NE Watford City, ND 58854
701-842-2074 | Planning to stay? Plan your trip at [VISITWATFORDCITY.COM](https://www.visitwatfordcity.com)

NORTH DAKOTA ZOOS

Tiger Exhibit

Minot Parks/Roosevelt Park Zoo Photo

Chahinkapa Zoo

Whapeton, ND | 1004 RJ Hughes Drive
www.chahinkapazoo.org | 701-642-8709

Hours

Daily 10 AM to 6 PM Through Labor Day
After Labor Day 10A M to 4 PM

Admission Fees

Children Under 2:	FREE
Children (Ages 3-12):	\$10.75
Adults:	\$14.75
Seniors (62+):	\$13.75
Military:	\$13.75

Dakota Zoo

Bismarck, ND | 602 Riverside Park Rd
www.dakotazoo.org | 701-223-7543

Hours (weather permitting)

Summer Hours
Late April to Sept: 10 AM to 6 PM daily
Winter Hours
October to Late April: 1 PM to 5 PM Friday-Sunday

Admission Fees

Babies under 2:	Free
Children ages 2-12:	\$10.00
Adults (age 13+):	\$14.00
Seniors (age 60+):	\$12.00
Military (with ID):	\$12.00

Red River Zoo

Fargo, ND | 4255 23rd Ave S
www.redriverzoo.org | 701-277-9240

Hours

Summer Hours
Daily 10 AM to 6 PM

Admission Fees

Children Under 2:	FREE
Children (Ages 2-14):	\$12.25
Adults:	\$14.75
Seniors (60+):	\$13.75

Roosevelt Park Zoo

Minot, ND | 1219 Burdick Expy E
www.rpzoo.com | 701-857-4166

Hours (weather permitting)

Summer Hours
May 9 AM - 6 PM
June-August 9 AM - 8 PM
September 9 AM - 6 PM
Winter Hours
October - April Monday-Saturday 10AM - 3PM

Summer Admission Fees

Children 2 & under:	FREE
Children (Ages 3-12):	\$8.00
Adults:	\$12.00
Military Adults:	\$10.00
Seniors (Ages 60+):	\$10.00
Student (w/ college ID):	\$10.00

Winter Admission Fees

Children 2 & under:	FREE
Children (Ages 3-12):	\$4.00
Adults:	\$6.00
Military Adults:	\$5.00
Seniors (Ages 60+):	\$5.00
Student (w/ college ID):	\$5.00

Wagon & Stroller Rentals available. Concession on site.



Goat Feeding Station

Minot Parks/Roosevelt Park Zoo Photo



ROOSEVELT PARK ZOO

**OPEN
YEAR ROUND**

**MAY 9AM-6PM
JUNE-AUG 9AM-8PM
SEPT 10AM-6PM
OCT-APR 10AM-3PM**



SUMMER ADMISSION
Adults \$12.00
Military \$10.00 (with ID)
College Students \$10.00 (with ID)
Seniors \$10.00
Kids 3-12 years \$8.00
2 & Under Free

FOLLOW US ON FACEBOOK 

1219 BURDICK EXPY EAST MINOT, ND
www.RPZoo.com • 701-857-4166



NORTH DAKOTA MUSEUMS

Fargo Air Museum

Bonanzaville USA

West Fargo, ND | 1351 Main Ave W | 701-282-2822
Interpreters and 40 buildings on 12 acres re-create life when “bonanza” farms ruled the prairies in the late 1800s. Bonanzaville USA includes just about every type of building and business that might have made up a small North Dakota town when the area was being settled.

Dakota Territory Air Museum

Minot, ND | 100 34th Ave NE | 701-852-8500
The museum tells a rich and varied story of region’s aviation history. In addition to a replica of the Wright Flyer, the museum displays military and civilian aircraft from 1903 through the present. There are exhibits, narratives, kiosks, military uniforms, aviation items, memorabilia, paintings, photographs and a gift shop.

Dickinson Museum Center

Dickinson, ND | 188 Museum Drive E | 701-456-6225
Dinosaur museum featuring 11 full-scale dinosaur skeletons, including real skeletons excavated from the area, one of the world’s finest real Triceratops skulls, skeletal casts and sculptures. Visitors may also view an outstanding mineral collection from locations all over the world, invertebrate fossils and a real Rhinoceros and bison excavated from the area. The center also contains a history museum that tells the story of Dickinson and southwestern North Dakota. The center contains two exhibit galleries, the Pioneer Machinery Building and the 12-acre Prairie Outpost Park with five historic and six reproduction buildings.

Fargo Air Museum

Fargo, ND | 1609 19th Ave N | 701-293-8043
A premier flying museum in the Upper Midwest. The rotation of historic flyable airplanes. Other exhibits include: History of the North Dakota Flying Aces, North Dakota Air National Guard, cloud modification and agriculture aviation. We also have historical military displays featuring World War II, Korea, Vietnam and Iraq and Afghanistan wars.

Frontier Village & World’s Largest Buffalo

Jamestown, ND | 404 Louis L’Amour Lane | 701-251-9145
Take a step back in time at this re-created prairie town. Original buildings from the frontier villages of North Dakota have been moved to this site and filled with antiques and artifacts that bring the world of the prairie pioneers to life.

Gateway to Science Center

Bismarck, ND | 1810 Schafer St, Suite 1
Gateway to Science is North Dakota’s hands-on science center and children’s museum. Ignite your imagination as you explore our unique gallery containing more than 90 interactive science exhibits. With subjects ranging from robotics to simple machines, real human brain specimen to nanotechnology and beyond, learning is made fun for all ages in an informal environment where hands-on experience is the best teacher.

Magic City Discovery Center

Minot, ND | 1545 1st St NW | 701-858-7529
The Magic City Discovery Center is a hybrid between a children’s museum and a science center. Magic City Discovery Center boasts 12 galleries of 150 interactive exhibits geared towards kids of all ages. Kids can expel energy at the climbing walls and the extensive 37 foot Magic Climber where the peak offers a 360 degree view of the Magic City itself through glass windows.

National Buffalo Museum

Jamestown, ND | 500 17th St SE | 701-252-8648
Seeing one albino bison in a lifetime puts you among a lucky few. Find three of them—in one place—and you must be in North Dakota. The National Buffalo Museum has long been known for its albino cow White Cloud, a sacred animal in many Native American cultures.

North Dakota Cowboy Hall of Fame

Medora, ND | 250 Main Street | 701-623-2000
Native American, Ranching and Rodeo in Medora provides the history and heritage of the trail drivers, homesteaders, rodeo stars, Native Americans and the horse’s impact on plains culture. Recipient of 2010 Best American Cowboy Museum in Sept. 2010.



Dickinson Museum Center

North Dakota Heritage Center

Bismarck, ND | 612 E Boulevard Ave | 701-328-2666
New galleries almost doubled the size of the North Dakota Heritage Center in Bismarck. Explore the dinosaur age, native tribes and modern cultural issues. Exhibits in the Treehouse, scheduled to open in 2015, will cater to tykes.

Old Soo Transportation Museum

Minot, ND | 15 North Main Street | 701-852-2234
The museum focuses on the history of transportation in the American West including railroads, automobiles, buses and aviation. Permanent exhibits include BNSF, Amtrak, Great Northern Railway, Milwaukee Road, Northern Pacific Railway, Soo Line/Canadian Pacific, Railway Express Agency and Westland Oil Company.

Prairie Village Museum

Rugby, ND | 102 US-2 | 701-776-6414
This museum at the Geographical Center of North America features 23 historic buildings and six exhibition halls arranged around a quaint village square. The museum's expansive collection includes everything from Native American powwow dresses to antique cars and farm machinery, to a real iron lung.

Railroad Museum of Minot

Minot, ND | 19 1st St NE | 701-852-7091
This museum is dedicated to the railroad history and culture that established many of the state's cities. Displays and artifacts trace the vital impact of the railroads on the communities and the way of life the railroads provided for many individuals. The museum focuses on the time period from 1886 to present and has many hands on displays and information for visitors for all ages.

The Children's Museum at Yunker Farm

Fargo, ND | 1201 28th Ave N 701-232-6102
The Children's Museum offers hands-on exhibits and creative, unique learning opportunities for children and families. The Museum is located at a picturesque farmstead that includes picnic areas, mini-golf, train and carousel rides, children's gardens, nature trails and a playground.

MHA Nation Interpretive Center Honoring Native Culture

If you're looking to experience and learn about North Dakota's extensive indigenous culture, be sure to take a visit to the new MHA Nation Interpretive Center in New Town, North Dakota! The MHA Nation, which is comprised of Mandan, Hidatsa and Arikara Nation tribes, also known as the Three Affiliated Tribes, is located on the Fort Berthold Indian Reservation in central North Dakota and includes over 16,800 members. The Interpretive Center is a newly developed tribute to the history and heritage of the Three Affiliated Tribes.

"We wanted to have a place where people could physically come and experience our culture, whether it's our own members from our reservation or people from off the reservation... We are a very rich culture and there is so much history and so much more to us than people know. It's an opportunity for people to see the entirety of what we've been through as Mandan, Arikara or Hidatsa people and where our history first began and where it is today, because we're still thriving," said Mykal Drosdal, Marketing Manager.

The center includes a variety of amenities and informative displays, including interactive exhibits and a recording studio for tribal members and elders to record their own stories to pass down for generations to come. They offer traditional catered meals and a coffee shop. It also includes two meeting rooms and a scenic rooftop that overlook Lake Sakakawea to be rented out for conferences, meetings, or weddings. The outdoor amphitheater holds up to 500 people for concerts and events. The MHA Interpretive Center also hosts permanent and rotating galleries that display artifacts and history from the three tribes as well as cultural seminars on beading, traditional agriculture and storytelling. There are also archival rooms for research and preservation of artifacts.

The Interpretive Center held its grand opening on May 19, 2021, and the staff looks forward to planning future events and exposing travelers from all over to the amazing heritage of the MHA Nation. Check out their Facebook page at MHA Nation Interpretive Center. The MHA Nation Interpretive Center is located at 9386 Lake Sakakawea Road, New Town, ND.



MHA Nation Interpretive Center
MHA Nation Interpretive Center Photo

NORTH DAKOTA MUSEUMS



Newly opened children's museum
Magic City Discovery Center

Magic City Discovery Center

North Dakota's first interactive science and children's museum is bursting at the seams with excitement! The glowing building on Minot's North Hill has been beckoning the imaginations of children (and adults) for months. In May 2023, the building officially opened to the public!

Parents won't have to worry about their kids not learning over the summer break this year because the Magic City Discovery Center boasts 12 galleries of 150 interactive exhibits geared towards kids of all ages. Kids can expel energy at the climbing walls and the extensive 37 foot Magic Climber where the peak offers a 360 degree view of the Magic City itself through glass windows.



Kids will also experience physical science come to life in the Air Forces gallery where different playscapes offer hands-on learning about wind energy. Although science focused, the Discovery Center also includes a space for the artist to blossom with the Creativity Studio. This gallery "encourages fearless creativity, creative problem solving, and risk as children of all ages explore a wide range of art disciplines with STEAM relationships to both process and products."

They offer yearly family memberships, military discounts and a wide range of open hours both on weekdays and weekends. Come on out and experience the brand new Magic City Discovery Center this summer! The kids will have so much fun you will forget how much they are learning!

Visit them today at 1545 1st St NW, Minot.



MAGIC CITY
**DISCOVERY
CENTER**

**DISCOVER.
CREATE.
EXPLORE.
PLAY.**



**1545 1ST ST NW
Minot, ND 58703**

**701-858-7529
MagicCityDiscoveryCenter.com**





DAKOTA TERRITORY
AIR MUSEUM

*Win this
1947
Aeronca
Champion*



JUNE 15
Flag Day
Honor Your Flag

JULY 17
Wings & Wheels

AUGUST 17
*Celebration of
National Aviation Day*
Win a Ride for Three

SEPTEMBER 18
National Aviation Day
Movie Highlights & Conversations

OCTOBER 19
Night at the Museum
Hangar Dance

TICKETS AVAILABLE FOR
PURCHASE ONLINE
DAKOTATERRITORYAIRMUSEUM.COM

*28th Annual
Sweepstakes*

ENTER TO WIN...
1947 Aeronca Champion or \$20,000 Cash
Winner's Choice

VISIT OUR WEBSITE FOR DETAILS

100 34th Ave NE, Minot • 701-852-8500

Museum Hours:

Mon-Sat: 10am - 5pm

Sun: 1pm - 5pm

Open: Mid May to Mid October

Admissions:

Ages 5 & Under: Free

Ages 6-17: \$5.00 Ages 18+: \$10.00

Family: \$20.00

Active Military - 50% Discount

dakotaterritoryairmuseum.com



Raging Rivers Water Park

POOLS & WATER PARKS

Elks Aquatic Center

Bismarck, ND | 321 W. Broadway Ave | 701-222-6607

Hillside Aquatic Complex

Bismarck, ND | 1719 E. Boulevard Ave. | 701-222-6419

Garrison Swimming Pool

Garrison, ND | 443 1st St. NW | 701-463-2751

Take a refreshing dip on a hot day and have a great time at the Garrison Swimming Pool which includes a slide and little tykes wading pool.

Raging Rivers Water Park

Mandan, ND | 2600 46th Avenue SE | 701-663-3393

Raging Rivers Water park features tube slides, speed slides, a lazy river and a brand new Aqua Play area. It is four acres of wet and wild fun!

Roosevelt Park Pool

Minot, ND | 1215 E Burdick Expy | 701-857-4136

The Roosevelt Park Pool is one the best places to cool off and have fun in Minot. The pool features a waterslide, a wading pool, and a recently finished expansion of the locker room facilities.

Splash Down Dakota Water Park

Minot, ND | Dakota Square Mall | 701-837-3115

The largest indoor water park in the mid-west region with three huge slides, a large pool, a kiddie splash area, and a spacious hot tub.

Turtle Island Indoor Water Park

Belcourt, ND | 3965 Sky Dancer Way NE | 701-244-5550

Whether you come for a relaxing float, dizzying twists and turns or thrilling plunges, Turtle Island Indoor Water Park won't disappoint. The 23,000 square foot facility is attached to Sky Dancer Resort & Casino for convenient access to lodging, dining and entertainment. Includes 3 waterslides, 175 foot long lazy river, Activity pool and Kiddie's play area.

Velva Swimming Pool

Velva, ND | 701-338-2668

Ask about our **Low Price Guarantee!**

- Drive-through estimate bay
- Fast, friendly & professional service
- I-Car Platinum class
- Drop-off/delivery service
- Lifetime warranty
- 24/7 phone service
- Over 99% customer satisfaction!

Proudly serving Minot & MAFB for over 30 years!

Hours

Monday - Thursday: 7:00am - 5:30pm
 Friday: 7:00am - 5:00pm

After hours contact Cory at 701.833.6695

**Hope you have safe travels,
but accidents can happen. Call us!**

701.839.0989

Address: 524 31st Avenue SW • Minot, ND

www.minotsfinest.com



Presented By **Dakota**
COMMUNITY
BANK & TRUST

JULY 2-4

TICKETS ON SALE NOW AT
MANDANRODEO.COM

DALE PAHLKE
ARENA



PRESENTING PARTNERS



TIGIRLY
Gold

**SATURDAY,
JUNE 29**

DALE PAHLKE ARENA
MANDANRODEO.COM/CONCERT



PRESENTED BY



NORTH DAKOTA FAIRS

North Dakota State Fair

Stutsman County Fair
June 12-15, 2024
 Jamestown, ND

Bottineau County Fair
June 13-16, 2024
 Bottineau, ND

McLean County Fair
June 14-16, 2024
 Underwood, ND

**Roughrider Days
 Fair & Expo**
June 15-July 4 2024
 Dickinson, ND

Burke County Fair
June 15-16, 2024
 Flaxton, ND

**Greater Grand Forks
 County Fair**
June 19-23, 2024
 Grand Forks, ND

**Upper Missouri
 Valley Fair**
June 26-30, 2024
 Williston, ND

Wells County Fair
June 20-23, 2024
 Fessenden, ND

Pembina County Fair
TBA
 Hamilton, ND

Pierce County Fair
June 27-30, 2024
 Rugby, ND

Red River Valley Fair
June 28-July 14, 2024
 West Fargo, ND

Mandan Rodeo Days
July 2-4, 2024
 Mandan, ND

Bowman County Fair
July 10-14, 2024
 Bowman, ND

Tri-County Fair
July 11-14 2024
 Wishek, ND

Mercer County Fair
July 10-14, 2024
 Beulah, ND

Sargent County Fair
July 25-28, 2024
 Forman, ND

Morton County Fair
July 31-August 4, 2024
 New Salem, ND

Adams County Fair
TBA
 Hettinger, ND

Ransom County Fair
August 21-25, 2024
 Lisbon, ND

Big Iron Farm Show
September 10-12, 2024
 West Fargo, ND

**North Dakota
 State Fair**
July 19-27, 2023
 Minot, ND

For tickets and full event details
 visit www.ndstatefair.com



**DAY OR NIGHT
 RAIN OR SHINE**
HARD WORK NEVER QUILTS.



Contact Us For All Your Electric Needs!
WWW.VERENDRYE.COM

Minot - Velva
701-852-0406
800-472-2141

MAGIC CITY



HARLEY-DAVIDSON

MINOT, ND



WE SELL

- NEW & USED H-D™ MOTORCYCLES
- GENUINE H-D™ PARTS & ACCESSORIES
- GENUINE H-D™ APPAREL & HOME GOODS

6701 HIGHWAY 83 S • MINOT, ND 58701
(2 MINUTES SOUTH OF WALMART)

701-839-6330 • WWW.MAGICCITYHDCOM

INDOOR ACTIVITIES

AMC Dakota Square 9

Minot, ND | 2400 10th St SW | 701-839-4123
9 Stadium movie theaters, popcorn, candy, and games. Located inside the Dakota Square Mall next to Scheel Hunting & Fishing.

Escape Point

Minot, ND | 18 2nd St NE, Suite 3 | 701-500-0501
An Escape Room is a live-action adventure game where players are locked in a room where they must find clues and solve a series of puzzles in order to escape the room within a set period of time.

Gourmet Chef

Minot, ND | 122 Main St S | 701-839-8928
Gourmet Chef is your locally owned and operated culinary center! Specializing in quality cookware, bakeware, cutlery, kitchen tools, and specialty foods. We also carry a large assortment of North Dakota products! We host cooking classes for all ages. Visit www.gchef.com for available classes.

High Air Ground

Minot, ND | 4th Ave NW | 701-837-5867
With over 10,000 sq. ft. of wall-to-wall trampolines and five private party rooms, HighAir Ground is the ideal venue for your next birthday party, team party and/or group event.

Margie's Art Glass Studio

Minot, ND | 109 Main Street South | 701-837-8555
Margie's is a locally owned studio bringing ceramics to life in a creative, inviting environment where family and community can gather to paint and create lasting memories. No reservations needed, walk-ins all day from open till one hour before close. Party room available.

North Hill Bowl

Minot, ND | 1901 N Broadway | 701-852-4108
Extremely fun if you want to go for extreme bowling, date night, or to play in a league. NHB is a family friendly 40 lane center! We have a restaurant, bar, and arcade! Fun for all ages!

Oak Park Theater

Minot, ND | 1500 4th Ave NW | 701-852-7469
Oak Park Theater has a long rich history in Minot and strive to keep that tradition going. Check out Oakparktheater.net for current shows and times

The Putt District

Minot, ND | 17 Main St S | 701-852-7888
The Putt District is a family-fun entertainment center in Minot, North Dakota featuring Glow in the Dark Mini-Golf, Arcade Lounge, and Clubhouse. The adventure starts here!

The Spot

Minot, ND | 6 2nd St NE | 701-852-7768
The Spot has 23 pool tables (16 diamond tables 13 cushion billiards table, 6 valley bar box tables) darts, golf simulator, batting cages, and video games.

X-GOLF

Minot, ND | 21 East Central Ave. Suite 102 | 701-852-2937
North Dakota's premier indoor golf training and recreation center is open to all ages. The Ultimate Indoor Golf Experience. Golf on some of the most famous courses from around the world on our top-of-the-line golf simulators, book a private event, or a personal lesson from our in-house golf Pro.

Up Your Axe

Minot, ND | 21 East Central Ave. Suite 102 | 701-852-2937
Up Your Axe is an Axe Throwing Entertainment Bar located in Minot. Up Your Axe is dedicated to bring something fun, exciting to the Minot Area for people over the age of 21+



MARGIE'S

109 South Main St.
Minot • 701.837.8555 margiesartglass.com

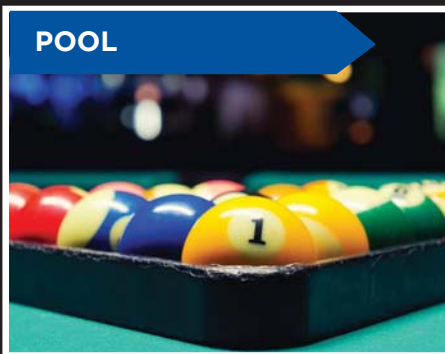
MINOT'S ONLY POOL HALL WITH
BILLIARDS, DARTS AND MORE.

the
SPOT

CORNHOLE



POOL



DARTS



MONDAY - THURSDAY: 11AM - 1AM
FRIDAY - SATURDAY: 11AM - 2AM
SUNDAY: CLOSED

6 2ND STREET NE, MINOT
701-852-7768
(SPOT)

The Best Fitness Studio in Minot!

VETERAN OWNED
PROUD TO SERVE
MAFB



SPECTRUM

FITNESS & SCHOOL OF MASSAGE



Whether you are new to exercise or an experienced athlete, Spectrum Fitness is the right place for you. We are a diverse community with a culture focused on fun and hard work. At Spectrum, we believe in only the highest standards of physical fitness training. Our mission is to provide life-changing fitness opportunities in a non-threatening environment, where our members will never be alone!

Here are just a few things that we offer:

- Massage School
- Massage Therapy
- Esthetics School
- Group Fitness
- Personal Training
- Brazilian Jiu Jitsu
- Kyokushin Karate
- CPR
- Edged Weapon Training
- Self Defense
- Bleed Stop Trauma Control
- Couples Dance Classes
- Hoola Hoop Lessons
- Aerial Silk Parties

Adults/Kids
Adults/Kids

And More!



To View Our Class Schedule or to Join a Class Visit

📍 1915 N Broadway, Minot 📞 (701) 509-2260

spectrumfitnessminot.com
spectrumschoolofmassage.com





GOLF COURSES & MINI GOLF

Wildwood Country Club Golf Course

Black Sand Golf Course

Beulah, ND | 1130 ND-49
701-873-2929

Located on the south side of Lake Sakakawea. The public course, formerly known as Beulah Municipal Golf Course, has been in operation since 1953. Play this 9-hole course twice, and it measures 6,226 yards and plays to a par 70.

Bully Pulpit Golf Course

Medora, ND | 3731 Bible Camp Rd | 701-623-4653
Chiseled into the awe-inspiring North Dakota Badlands, you'll fall in love with the wild and breathtaking scenery that surrounds Bully Pulpit Golf Course, while enjoying a world-class golf experience. This 18-hole venue features five tees, ranging in length from a comfortable 4,750 total yards from the forward tees to a challenging 7,166 at the tips.

Eagle Ridge Golf Club

Williston, ND | 6401 3rd Ave E | (701) 572-6500
Not far from Williston, Eagle Ridge Golf Club offers terrific views and challenging play for golfers at every skill level. Well-groomed fairways and greens keep Eagle Ridge Golf Club difficult yet friendly, and the staff can offer tips and tricks for playing your best round. Eagle Ridge is a terrific choice for your regular rounds of golf, or perhaps a new destination for you and friends when visiting Williston.

Edgewater Golf Course

New Town, ND | 100 Highway 23 | (701) 627-9407
The 9-hole "Edgewater" course at the Edgewater Country Club facility in New Town, North Dakota features 3,278 yards of golf from the longest tees for a par of 36. Edgewater golf course opened in 1979. Ray Helphrey manages the course as the General Manager.

Garrison Golf Course

Garrison, ND | Hwy 37, | 701-337-5420
Beautiful 9-hole, par-36 golf course. Year-round golf on the new state of the art golf simulator! Nice clubhouse for seating up to 75 people with hot food!

Jack Hoeven Wee Links Golf Course

Minot, ND | 900 Forest Road | 701-857-1570
The Wee Links is a real golf course consisting of nine holes varying from 60 to 120 yards in length. It was designed specifically for kids. Each hole promotes one of the The First Tee's 9 Core Values.

Lucy's Amusement Park (Mini Golf)

Minot, ND | 5119 Hwy 83 S | 701-839-2320
Lucy's Amusement Park is a terrific place to have hours of family fun. The park offers the most challenging 18-hole miniature golf course in the northwest, cosmic orbiter, a tower slide, various kiddie rides, disco scooter and moonwalk. Picnic areas are available with bonfire by request. Ride fees set for individual rides.

Minot Country Club

Minot, ND | 1912 Valley Bluff Dr | 701-852-3591
This member only course features four sets of tees ranging from 4,686 yards to 7,029 yards. In addition to world-class golf, Minot Country Club has a new clubhouse featuring golf shop, restaurant, lounge, conference room and locker room facilities. There is a practice facility with short game area, a member pool and other year round family friendly activities.

Pebble Creek Golf Course

Bismarck, ND | 2525 N. 19th St | 701-223-3600
Pebble Creek plays to par 70 with a length of 5,874 yards for 18 holes. This links-style course with native grass rough has water in play on five holes, and big fast greens to test your putting nerves. Pebble Creek is also the site of Fore Seasons Golf Center that features an indoor driving range, pro shop and a batting cage. Club rentals, pro shop, indoor and outdoor driving range, putting green and cart rentals are also available.

Riverwood Golf Course

Bismarck, ND | 725 Riverwood Drive | 701-222-6462
Riverwood is an 18-hole course with tree-lined fairways making for challenging play. From the tips, the par-72 course measures 7,004 yards. The course has been lengthened from 6929 yards while rating/slope remains the same. The distinction is made by the magazine's nationwide team of course raters, and is an exclusive honor given to public golf courses.

Roughrider Golf Course

Minot AFB, ND | 220 Golf Drive | 701-723-3164
A challenging nine-hole course located near the Base and can be entered directly from US Highway 83. The complex is managed and maintained in a relaxed, friendly atmosphere and offers nine holes, a driving range, putting green, chipping green, and picnic area. The club house includes a pro shop and snack bar/lounge.



Pebble Creek Golf Course

Souris Valley Golf Course

Minot, ND | 2400 14th Avenue SW | 701-857-4189
The 18-hole "Souris Valley" course at the Souris Valley Golf Course facility in Minot, North Dakota features 6,759 yards of golf from the longest tees for a par of 72. The course rating is 72.5 and it has a slope rating of 125 on Blue tees.

Star City Golf Course

Velva, ND | Highway 41 North | 701-338-2363
9-holes of golf that is ideal for all levels of golfers and is designed to help you improve your game. You will be able to test your skill set with our numerous water hazards and carefully placed sand traps.

Super Slide (Mini Golf)

Bismarck, ND | 500 Riverside Park Rd | 701-255-1107
Superslide Amusement Park has a variety of activities for everyone to enjoy! Come play a round of mini-golf with friends or challenge your family to a game of Bankshot Basketball. Take a trip down the 6-lane Superslide and soar above the trees on the Ferris Wheel.

The Links of North Dakota

Ray, ND | 5153 109th Ave NW | 701-568-2600
The Links of North Dakota is an example of some of the purest links style golf. This natural, rolling true links design harkens back to the birth of the game – golf as it should be played - in a truly magnificent setting along the bluffs and banks overlooking sprawling Lake Sakakawea.

Thunder Road (Mini Golf)

Fargo, ND | 2902 Thunder Rd S | 701-282-5151
Two unique 18-hole miniature golf courses, both playing up around the volcano, with ponds, rivers and waterfalls. You can have a relaxing round of golf or play competitive style complete with score cards.

Vardon Golf Club

Minot, ND | 7101 County Road 15 W | 701-852-0312
Formally the Minot Country Club, hosting golfers since 1929 but devastated by 2011 flooding, then rebuilt and rebranded as Vardon Golf Club, this golf course offers a memorable golfing experience for all types of players. Come out for a great round of golf or just to grab some food in the bar/grille.

Wildwood Country Club Golf Course

Burlington, ND | 8401 Highway 15 | 701-725-4653
Wildwood Country Club is an 18-hole regulation length golf course. Offers amenities such as a driving range, pull carts, riding carts, lessons, pro shop gear and great dining.



Thunder Road

NODAK SPEEDWAY

MINOT, NORTH DAKOTA
EST. 1953

f /RACENODAK

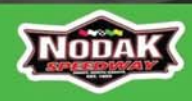
2024 SCHEDULE

- APRIL 20TH & 21ST**
MAGIC CITY CAR AND TRADE SHOW
- APRIL 28TH**
TEST & TUNE
PRACTICE 12 P.M. - 6P.M.
ALL CLASSES INVITED
- *MAY 5TH**
SEASON OPENER
RACES START AT 6 P.M.
H-SM-SC-ST-M
- *MAY 12TH**
MOTHER'S DAY PROGRAM
RACES START AT 6 P.M.
H-SM-SC-ST-M
- *MAY 19TH**
MAGIC CITY DIRT SERIES
RACES START AT 6 P.M.
H-SM-SC-ST-M
- *MAY 26TH**
MAGIC CITY DIRT SERIES
RACES START AT 6 P.M.
H-SM-ST-M
- *MAY 27TH**
MEMORIAL DAY PROGRAM
RACES START AT 6 P.M.
H-SM-SC-ST-M
- *JUNE 2ND**
MAGIC CITY DIRT SERIES
RACES START AT 7 P.M.
H-SM-SC-ST-M
- *JUNE 9TH**
TOUGHER THAN DIAT TOUR
RACES START AT 7 P.M.
H-SM-L-ST-M (POINTS NIGHT FOR ST-M)
- *JUNE 16TH**
FATHER'S DAY
RACES START AT 7 P.M.
H-SM-SC-ST-M
- *JUNE 23TH**
MAGIC CITY DIRT SERIES
RACES START AT 7 P.M.
H-SM-SC-ST-M
- *JUNE 30TH**
CHAMPIONSHIP NIGHT
RACES START AT 7 P.M.
H-SM-SC-ST-M
- JULY 4TH**
FIREWORKS SPECIAL
RACES START AT 7 P.M.
W-H-L-SC-SL-SM
- JULY 7TH**
DAKOTA CLASSIC MODIFIED TOUR
RACES START AT 7 P.M.
STOCK CARS AND MODIFIEDS ONLY
- AUGUST 4TH**
RACE NIGHT
RACES START AT 7 P.M.
W-SC-ST-SL-L
- AUGUST 11TH**
RACE NIGHT
RACES START AT 7 P.M.
W-H-SL-L-SM
- AUGUST 18TH**
MONTE LUNDY MEMORIAL
RACES START AT 7 P.M.
W-SL-L-M
- AUGUST 25TH**
RACE NIGHT
RACES START AT 7 P.M.
W-SL-SC-L-SM
- AUGUST 30TH**
MOTOR MAGIC
FRIDAY NIGHT #1
RACES START AT 7 P.M.
SM-ST-H-M
- AUGUST 31ST**
MOTOR MAGIC
SATURDAY NIGHT #2
RACES START AT 7 P.M.
SM-ST-SL-SC-H-M
- SEPTEMBER 1ST**
MOTOR MAGIC
SUNDAY NIGHT #3
RACES START AT 7 P.M.
SM-ST-SL-SC-H-M
- OCTOBER 19TH**
NODAK BANQUET
SOCIAL @ 5 P.M.

CLASS GUIDE:
 H - IMCA HOBBY STOCKS M - IMCA MODIFIEDS
 SM - IMCA SPORT MODS SL - SLINGSHOTS
 SC - SPORT COMPACTS W - WINGLESS SPRINTS
 ST - IMCA STOCK CARS
 TRACK POINTS NIGHTS ARE NOTED WITH AN *



WWW.RACENODAK.COM
RACELINE: 701.822.7223





NORTH DAKOTA MOTORSPORTS

Riding Off Highway Vehicles

Registered OHVs literally have thousands of miles of riding opportunities in North Dakota. An off-highway vehicle is any wheeled motorized vehicle not designed for use on a highway and capable of cross-country travel on land, snow, ice, marsh, swampland, or other natural terrain.

Riding is allowed on:

- A paved highway posted with a speed limit not exceeding 55 miles per hour.
- A licensed driver over 16 years of age may operate a registered Class III OHV on a paved highway designated and posted at a speed not exceeding 65 miles per hour.
- The highway right of way, bottom of the ditch or along the outslope. It is illegal to

operate on the shoulder or inside slope.

• A gravel, dirt, or loose surface roadway. Riding is NOT allowed on:

- Controlled access highways/interstates
- Posted or restricted public/private property that is regulated by local ordinances
- State Parks, State Recreation Areas, Historic Sites or Wildlife Protection and Management Areas
- Tree nursery or planting areas
- Railroad right of ways
- Motorized trails designed and leased for snowmobiles

Public lands open to OHV

- **Pembina Gorge** - Pembina Gorge trails will be open to OHV recreation starting Memorial Day weekend.

• **St. John's OHV Park** - Located NW of Rolla in the town of St. John.

• **Little Missouri National Grasslands** - Riders will find several hundred miles of riding opportunities. OHVs must stay on established roads and trails.

• **Roughrider OHV Trail** - A 16-mile trail managed by the North Dakota Parks and Recreation Department. The trail is located 30 miles south of Mandan on Highway 1806; it begins at the Fort Rice Campground, travels north on an old railroad bed, and ends at Little Heart Bottoms.

• **Kimball Bottoms Recreation Area** - Also known as, The Desert, this 400-acre play area is managed by the U.S. Army Corps of Engineers and is located 8 miles south of Bismarck, ND.



SWING INTO

ALLEY'S

Repair & Alignment Inc.

COOLING & HEATING SPECIALISTS!

OPEN
M-F 8-5:30








2635 Valley Street, Minot, ND • 701-839-7112 • alleys@srt.com

Serving Minot, MAFB & Surrounding Areas Since 1976

Let **ALLEY'S** take the **OOPS** out of your vehicles!

- | | | | |
|------------------------------|--------------|------------------|------------------------------|
| • Fuel Injection System | • 4 WDs | • Tire Balancing | • All General Repair |
| • Electronic Diagnostics | • Struts | • Suspension | • Brakes |
| • Cooling System Specialists | • Shocks | • Tires | • Full Vehicle Inspections |
| • MotorVac Carbon Clean | • Alignments | • Tune-ups | • Heating System Specialists |



Complete Auto Repair • Over 100 Years Combined Experience!

FLYING ADVENTURE



Minot Aero Center

We offer the best adventures from the sky! We offer scenic flights; flight instruction; aircraft rentals; and so much more!

Plan a fun date night; a weekend getaway; attend fly in breakfasts; or create a flying legacy and fly to all of the ND airports. The possibilities are endless! Experience the adrenaline rush!

Contact Us:

2216 North Broadway, Minot ND
Phone: 701.852.4092
Email: info@minotaerocenter.com
Web: www.minotaerocenter.com

Find us on Facebook and Instagram:
[@minotaerocenter](#)





RECREATIONAL RENTALS

Paddle On North Dakota | Mandan, ND

Stand Up Paddle Boards

The stand up paddle board can be as challenging as you make it - can you imagine doing yoga while floating down the Missouri River? It is totally doable!

Canoes

Bringing stuff? Our 17ft Canoes can pack ALOT of gear! They can also fit 2 adults or a few kids.

Kayaks

Kayaks glide through the water with ease. More maneuverable than canoes, they also have some space to stow gear.

Tandem Kayaks

Kayak with a friend... do less work! Paddling is much easier in a tandem. Fits 2 people plus some of your stuff.

Van Hook Resort | New Town, ND

Fishing Boats & Kayaks

Predator single person fishing kayaks that come with stabilizer bar for stand up casting, fish stringer, raised seat, landing net, rod holders and more! Heron Twin, 2 person fishing or touring kayaks. Sleek and stable design, comfort molded seats. Perfect one or two adults or one adult and a couple smaller children. Heron Junior, single person youth kayak. Stable, safe and tons of fun for young paddlers!

Stand Up Paddle Boards

Walk on water! Stable design for paddlers of all ages and skill levels. Rental includes life jackets and brief instruction for first time paddlers

Woodland Resort | Devils Lake, ND

Fishing Boats & Pontoons

Alumacraft Fishing Boats, deluxe fishing style Avalon pontoons, and deluxe cruise-fish style Avalon pontoons. All rentals come with fuel, life jackets, landing nets, minnow buckets, and are well maintained and guaranteed dependable. Rent by the day, 1/2 day, or hour. Special week packages. Full-day rentals are required on weekends and holidays.

Fort Stevenson State Park

Garrison Marina

Aqua Pads, Bikes, Canoes, Fat Tire Bikes, Kayaks, Kicksleds, Motorized Boats, Boats, Pontoons, Paddleboats.

Lake View Lodge | Devils Lake, ND

Fishing Boats

3- 18 ft Lund Alaskans, with 4 pedestal seats and a 75 hp 4-stroke motor. Side counsels.

Lake Sakakawea | Pick City, ND

The Park rents a variety of recreational equipment including paddle boats, canoes, kayaks, paddle boards and wave runners. All equipment is housed and rented at the park swim beach. Personal Floatation Devices (PFD's) are offered on loan for both adults and children.

Dakota Cyclery Mountain Bike Adventures | Medora, ND

Mountain Bikes

We have a wide variety of rentals - from high end full sususpention for the Maah Daah Hey to flat bar road bikes for the nearby National Park Loop to cruisers for hitting the streets of little Medora.

Epic Sports | Bismarck, ND

Bikes
The Bismarck-Mandan area is filled with bike trails — paved and off-road, just waiting for you to ride. If you're from out-of-town, or your bike is in the shop, consider renting one of our bikes. Our rental bikes are always kept in tip-top shape and are of the highest quality. Our staff will help you select the best bike for you and what you intend to do. We also have bike trail maps available, and can help get you where you need to be to find that perfect trail. We are also one of the last stops before the legendary Maah Daah Hey Trail in Western North Dakota.





TIRE SERVICE, INC.

5250 7th Ave SW, Minot ND
 3/4 Mile West of Flying J Truck Stop
 www.pompstire.com
 701-852-3385

"The Tire & Service Professionals"
 Since 1939



Tire Special

\$10 OFF Any Two Tire Purchase
 OR
\$25 OFF Any Set of Four Tires

Must present coupon to get this offer. Savings off regular price. Most vehicles. No other discounts apply. Will be deducted from participating retailer's price at the time of purchase. Additional charge for shop supplies may be added. No carryouts. Redeem at a participating Pomps' location. Offer ends 8/31/24.

FREE VEHICLE INSPECTION with any Tire or Service purchase!

Instant Savings

\$50 OFF ANY PURCHASE OVER \$100

TIRE & AUTO SERVICE

Must present coupon to get this offer. Savings off regular price. No other discounts apply. Will be deducted from participating retailer's price at the time of purchase. Redeem at a participating Pomps' location. Offer ends 8/31/24.

Brake Special

\$25 OFF Per Axle (ABS)

Any Brake Service of \$100 or More (If inspection reveals the need for service.)

Come see us if...

- Your brake-warning light is on
- You hear grinding or squealing
- You notice a change in braking pressure

Must present coupon to get this offer. Savings off regular price. Most vehicles. No other discounts apply. Will be deducted from participating retailer's price at the time of purchase. Additional charge for shop supplies may be added. No carryouts. Redeem at a participating Pomps' location. Offer ends 8/31/24.

Computerized Alignment

\$10 OFF Regular Price
\$15 OFF Regular Price With Purchase of Four Tires

Includes:

- Front caster, camber & toe set to manufacturer's specifications, where applicable
- Reference & compensation, or adjustment of thrust line, depending on alignment type

(Many front wheel drive vehicles today require rear wheel adjustment at an additional cost.) Must present coupon to get this offer. Savings off regular price. Most vehicles. No other discounts apply. Excludes some 4-wheel drive vehicles. Front wheel drive vehicles may require rear wheel adjustment at an additional cost. Vehicles with Electronic Stability Control may be extra. Will be deducted from participating retailer's price at the time of purchase. Additional charge for shop supplies may be added. Redeem at a participating Pomps' location. See store for complete details. Offer ends 8/31/24.

"Sliding Scale" Service Coupon

SAVE!

SERVICE TOTALS:	RECEIVE DISCOUNT:
\$ 50.00 - 99.99	\$10.00 OFF
\$ 100.00 - 199.00	\$20.00 OFF
\$ 200.00 - 299.00	\$30.00 OFF
\$ 300.00 - 499.00	\$40.00 OFF
\$ 500.00 or MORE	\$50.00 OFF

Must present coupon to get this offer. Savings off regular price. Will be deducted from participating retailer's price at the time of purchase. Excludes tires. Additional charge for shop supplies may be added. No other discounts apply. Redeem at a participating Pomps' location. Offer ends 8/31/24.

Air Conditioning Service

\$15 OFF Regular Price

Any Auto/LT Air Conditioning Service

Must present coupon to get this offer. Savings off regular price. Most vehicles. No other discounts apply. Will be deducted from participating retailer's price at the time of purchase. Additional charge for shop supplies may be added. No carryouts. Redeem at a participating Pomps' location. Offer ends 8/31/24.

Oil Change

\$10 OFF Regular Price

Regular or Synthetic Oil Change

Must present coupon to get this offer. Savings off regular price. Most vehicles. One coupon per customer per vehicle. No other discounts apply. Will be deducted from participating retailer's price at the time of purchase. Additional charge for shop supplies may be added. Redeem at a participating Pomps' location. Offer ends 8/31/24.

All Batteries

\$10 OFF Regular Price

Brands may vary by location.

Must present coupon to get this offer. Savings off regular price. Most vehicles. No other discounts apply. Will be deducted from participating retailer's price at the time of purchase. Additional charge for shop supplies may be added. Redeem at a participating Pomps' location. Offer ends 8/31/24.



SHOOTING RANGES

Souris Valley Bowmen

Bismarck/Mandan Rifle & Pistol Association

Bismarck, ND | 701-673-3321
Muzzleloading, Outdoor Pistol, Outdoor Rifle (50-1000 yds),
Pistol Silhouette, Rifle Silhouette.

Capital City Sporting Clays LLC

Bismarck, ND | 701-220-1003
Skeet, Sporting Clays.

Lake Region Shooting Sports Association

Devils Lake, ND | Box 207 | 701-662-5301
Archery, Indoor Pistol (50 ft), Indoor Rifle (50 ft), Muzzleloading,
Outdoor Pistol (25,50,75,100,150,200,300), Outdoor Rifle
(25,50,75,100,150,200,300), Pistol Silhouette, Rifle Silhouette,
Skeet, Trap.

Nodak Arms Pistol Range

Minot, ND | 601 104th St SE | 701-839-0005
2 Lane Range is 2 lanes. \$1/minute gets you access to the entire
range regardless of the number of shooters in your group.
We have over a dozen hand guns if you want to try something
different or do not have your own firearm. Open 10am-6pm
Monday-Saturday

Minot Rifle & Pistol Club

Minot, ND | 1600 62nd St SW | 701-838-7882
Facilities include a 25 yard, 12-lane indoor range with
classroom; 120 acres outdoor range complete with multiple
shooting bays for pistol and longer range rifle bays. Outdoor
range is for members and their guests with passes only. Indoor
range is for members and the general public.

Rugby Shooting Club

Rugby, ND | Box 153 | 701-776-2879
Airgun, Outdoor Pistol (25 & 50 yds), Outdoor Rifle (25, 50, 75,
100 & 200 yds), Pistol Silhouette, Rifle Silhouette, Sporting Clays,
Trap.

Souris Valley Bowmen

Minot, ND | 6175 County Road 12 W | 701-240-6892
The Souris Valley Bowmen archery club maintains a 45-
acre outdoor range from May 1st until November, located
3 miles west of Minot, 1/2 mile southwest of the Trestle
Valley railroad trestle. Full and Partial Year memberships are
available as well as Individual and Family.

Spartan Firearms

Minot, ND | 7051 Hwy 2 & 52 W | 701.838.4867
12 lane shooting range features state-of-the-art equipment
to ensure your experience is top notch, safe, and fun.
Whether you are a novice or experienced shooter, our
shooting range is the best place to practice and improve
your shooting skills. Our range is entirely indoors, so you
can shoot comfortably with your friends and family all year
round.

Turtle Lake Wildlife Club

Turtle Lake, ND | 701-448-2687
Trap.

Public Shooting Ranges

The North Dakota Game and Fish Department manages five
public shooting ranges on its wildlife management areas.
These are generally open to the public year round. However,
they may periodically close for maintenance, improvements
and events.

Lewis and Clark WMA

Six miles southwest of Williston

Little Heart Bottoms

12 miles south of Mandan off ND Highway 1806

MacLean Bottoms

Two miles south of ND Hwy 1804, 15 miles SE of Bismarck

Riverdale WMA

Two miles southwest of Riverdale

Wilton Mine WMA

Two miles east of Wilton



MHA NATION INTERPRETIVE CENTER



THE INTERPRETIVE CENTER FEATURES:

- 250-SEAT MEETING ROOMS
- 500-SEAT AMPHITHEATER
- CLASSROOM SPACE
- CULTURAL SEMINARS ON BEADING, TRADITIONAL AGRICULTURE AND STORYTELLING
- TRADITIONAL CATERED MEALS
- OAK TREE GIFT SHOP
- MIRISHIBISHA (BLACK WATER) COFFEE SHOP
- SPECIAL EVENTS AND CULTURAL DEMONSTRATIONS
- MUSEUM



TRAVEL TO PLACES YOU 'VE NEVER BEEN TO AND EXPERIENCE A NEW CULTURE.

9386 LAKE SAKAKAWEA RD. NEWTOWN, ND
701.627.2238



Anything is fossil-ble.

Live large! Discover a T. rex and other awesome fossils at the North Dakota Heritage Center & State Museum in Bismarck.

Plan a visit. Admission is always free!
statemuseum.nd.gov



HISTORY FOR
everyone.

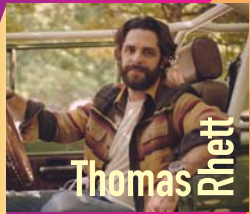




Lainey
Wilson



Mötley
Crüe



Thomas
Rhett



Lil
Wayne



Sawyer
Brown



MGK



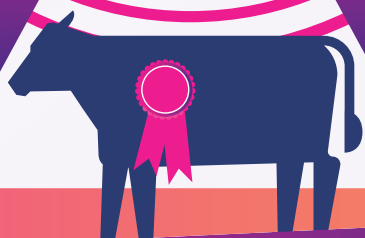
Ismpike
Troubadours

NDSE

NORTH DAKOTA STATE FAIR

JULY
19-27
2024

Get your FAiR on!



- ★ Demolition Derby
- ★ MHA Indian Horse Relay

MINOT, ND
NDStateFair.com

- ★ Ranch Rodeo
- ★ Bull Riding Challenge & Ranch Bronc Riding

